

Active Recombinant Human KDR protein, His-tagged

Cat. No. KDR-511H **Lot. No.** (See product label)

SPECIFICATION

Product Overview	Active Recombinant Human KDR protein(P35968-1)(Ala20-Glu764) is expressed from HEK293 with His tag at the C-terminus.
Species	Human
Source	HEK293
ProteinLength	20-764 aa
Form	Supplied as 0.22 µm filtered solution in PBS (pH 7.4).
Bio-activity	Immobilized Human VEGF165, No Tag at 5µg/ml (100µl/well) on the plate. Dose response curve for Human VEGF R2, HisTag with the EC50 of 0.35µg/ml determined by ELISA.
Molecular Mass	The protein has a predicted MW of 84.88 kDa. Due to glycosylation, the protein migrates to 120-160 kDa based on Bis-Tris PAGE result.
Endotoxin	Less than 0.1 EU per µg by the LAL method.
Purity	> 95% as determined by Bis-Tris PAGE > 95% as determined by HPLC
Storage	-20 to -80°C for 12 months as supplied from date of receipt. -80°C for 3 months after reconstitution. Recommend to aliquot the protein into smaller quantities for optimal storage. Please minimize freeze-thaw cycles.

 Tel: 1-631-559-9269 1-516-512-3133

 Email: info@creative-biomart.com  Fax: 1-631-938-8127

 45-1 Ramsey Road, Shirley, NY 11967, USA

Concentration 0.2-1.0 mg/mL.

GENE INFORMATION

Gene Name KDR kinase insert domain receptor (a type III receptor tyrosine kinase) [Homo sapiens]

Official Symbol KDR

Synonyms KDR; kinase insert domain receptor (a type III receptor tyrosine kinase); vascular endothelial growth factor receptor 2; CD309; FLK1; VEGFR; VEGFR2; soluble VEGFR2; fetal liver kinase 1; fetal liver kinase-1; protein-tyrosine kinase receptor Flk-1; tyrosine kinase growth factor receptor;

Gene ID 3791

mRNA Refseq NM_002253

Protein Refseq NP_002244

MIM 191306

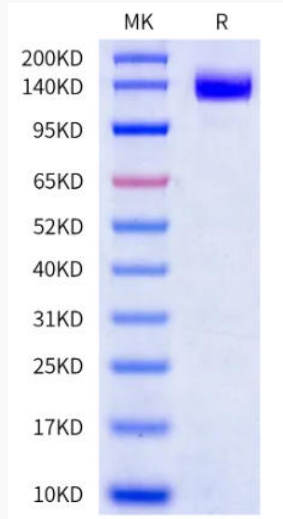
UniProt ID P35968

 Tel: 1-631-559-9269 1-516-512-3133

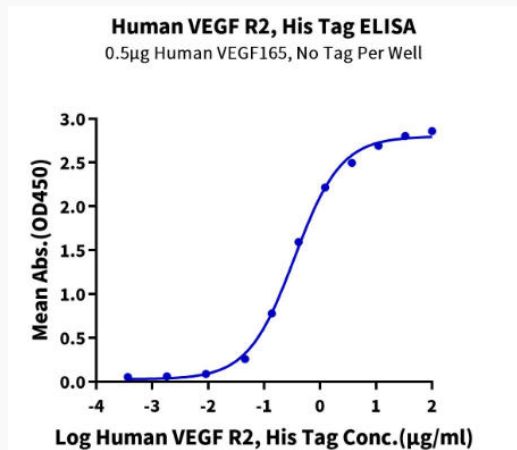
 Email: info@creative-biomart.com  Fax: 1-631-938-8127

 45-1 Ramsey Road, Shirley, NY 11967, USA

Bis-Tris PAGE



ELISA Data



 Tel: 1-631-559-9269 1-516-512-3133

 Email: info@creative-biomart.com  Fax: 1-631-938-8127

 45-1 Ramsey Road, Shirley, NY 11967, USA