

Recombinant Human KDR protein, mFc-tagged

Cat. No. KDR-5143H **Lot. No.** (See product label)

SPECIFICATION

Product Overview	Recombinant Human KDR protein(P35968-1)(Ala20-Glu764), fused with C-terminal mFc tag, was expressed in HEK293.
Species	Human
Source	HEK293
ProteinLength	Ala20-Glu764
Tag	C-mFc
Form	Lyophilized from 0.22µm filtered solution in PBS (pH 7.4). Normally 5% trehalose is added as protectant before lyophilization.
Bio-activity	Immobilized Human VEGF165 1ug/ml (100ul/Well) on the plate. Dose response curve for Human VEGF R2, mFc Tag with the EC50 of 42.3ng/ml determined by ELISA.
Molecular Mass	The protein has a predicted MW of 110 kDa. Due to glycosylation, the protein migrates to 150-200 kDa based on Tris-Bis PAGE result.
Endotoxin	Less than 1EU per µg by the LAL method.
Purity	> 95% as determined by Tris-Bis PAGE;> 95% as determined by HPLC
Storage	Reconstituted protein stable at -80°C for 12 months, 4°C for 1 week. Use a manual

 Tel: 1-631-559-9269 1-516-512-3133

 Email: info@creative-biomart.com  Fax: 1-631-938-8127

 45-1 Ramsey Road, Shirley, NY 11967, USA

defrost freezer and avoid repeated freeze-thaw cycles.

Reconstitution

Centrifuge tubes before opening. Reconstituting to a concentration more than 100 µg/ml is recommended. Dissolve the lyophilized protein in distilled water.

GENE INFORMATION

Gene Name

KDR kinase insert domain receptor (a type III receptor tyrosine kinase) [Homo sapiens]

Official Symbol

KDR

Synonyms

KDR; kinase insert domain receptor (a type III receptor tyrosine kinase); vascular endothelial growth factor receptor 2; CD309; FLK1; VEGFR; VEGFR2; soluble VEGFR2; fetal liver kinase 1; fetal liver kinase-1; protein-tyrosine kinase receptor Flk-1; tyrosine kinase growth factor receptor;

Gene ID

3791

mRNA Refseq

NM_002253

Protein Refseq

NP_002244

MIM

191306

UniProt ID

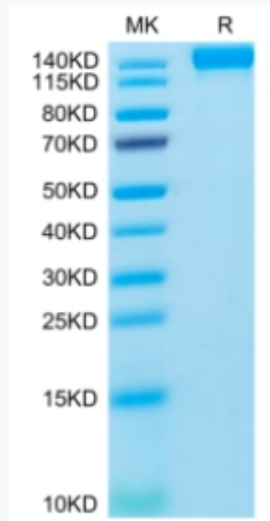
P35968

 Tel: 1-631-559-9269 1-516-512-3133

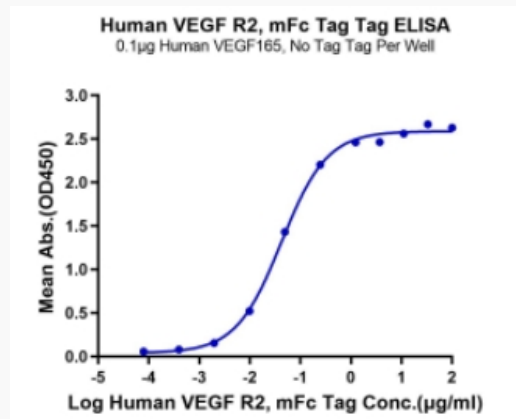
 Email: info@creative-biomart.com  Fax: 1-631-938-8127

 45-1 Ramsey Road, Shirley, NY 11967, USA

Tris-Bis PAGE



ELISA Data



Tel: 1-631-559-9269 1-516-512-3133

Email: info@creative-biomart.com Fax: 1-631-938-8127

45-1 Ramsey Road, Shirley, NY 11967, USA