

Recombinant Human KEAP1 Protein (1-624 aa), His-tagged

Cat. No. KEAP1-2185H Lot. No. (See product label)

SPECIFICATION

Product Overview	Recombinant Human KEAP1 Protein (1-624 aa) is produced by Yeast expression system. This protein is fused with a 6xHis tag at the N-terminal. Research Area: Epigenetics and Nuclear Signaling. Protein Description: Full Length.
Species	Human
Source	Yeast
ProteinLength	1-624 aa
Description	Acts as a substrate adapter protein for the E3 ubiquitin ligase complex formed by CUL3 and RBX1 and targets NFE2L2/NRF2 for ubiquitination and degradation by the proteasome, thus resulting in the suppression of its transcriptional activity and the repression of antioxidant response element-mediated detoxifying enzyme gene expression. Retains NFE2L2/NRF2 and may also retain BPTF in the cytosol. Targets PGAM5 for ubiquitination and degradation by the proteasome.
Form	Tris-based buffer, 50% glycerol
Molecular Mass	71.7 kDa
AA Sequence	MQPDPSPSGAGACCRFLPLQSQCEGAGDAVMYASTECKAEVTPSQHGNRTFSY TLEDHTKQAFGIMNELRLSQQLCDVTLQVKYQDAPAAQFMAHKVVLASSSPVFKAM FTNGLREQGMEVVSIEGIHPKVMERLIEFAYTASISMGEKCVLHVMNGAVMYQIDSV VRACSDFLVQQLDPSNAIGIANFAEQIGCVLHQRAREYIYMHFGEVAKQEEFFNLS

 Tel: 1-631-559-9269 1-516-512-3133

 Email: info@creative-biomart.com  Fax: 1-631-938-8127

 45-1 Ramsey Road, Shirley, NY 11967, USA

HCQLVTLISRDDLNVRCSESEVFHACINWVKYDCEQRRFYVQALLRAVRCHSLTPNFL
 QMQLQKCEILQSDSRCKDYLVKIFEELTLHKPTQVMPCRAPKVGRLIYTAGGYFRQS
 LSYLEAYNPSDGTWLRRLADLQVPRSLAGCVVGGLLYAVGGRNNSPDGNTDSSAL
 DCYNPMTNQWSPCAPMSVPRNRIGVGVIDGHIYAVGGSHGCIHHNSVERYEPERD
 EWHLVAPMLTRRIGVGVAVLNRLLYAVGGFDGTNRLNSAECYPERNEWRMITAM
 NTIRSGAGVCVLHNCIYAAGGYDGGDQLNSVERYDVETETWTFVAPMKHRRSALGI
 TVHQGRIYVLGGYDGHTFLDSVECYDPDTDTWSEVTRMTSGRSGVGVAVTMEPCR
 KQIDQQNCTC

Purity > 90% as determined by SDS-PAGE.

Notes Repeated freezing and thawing is not recommended. Store working aliquots at 4 centigrade for up to one week.

Storage The shelf life is related to many factors, storage state, buffer ingredients, storage temperature and the stability of the protein itself. Generally, the shelf life of liquid form is 6 months at -20 centigrade/-80 centigrade. The shelf life of lyophilized form is 12 months at -20 centigrade/-80 centigrade.

Concentration A hardcopy of COA will be sent along with the products. Please refer to it for detailed information.

GENE INFORMATION

Gene Name [KEAP1 kelch-like ECH-associated protein 1 \[Homo sapiens \]](#)

Official Symbol [KEAP1](#)

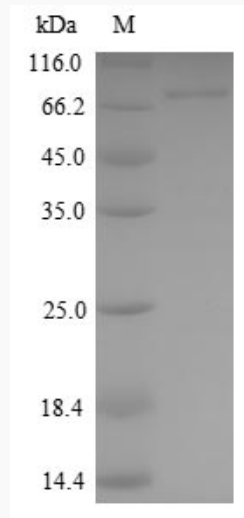
Synonyms KEAP1; INrf2; KIAA0132; KLHL19; MGC1114; MGC4407; MGC9454; MGC10630; MGC20887;

 Tel: 1-631-559-9269 1-516-512-3133

 Email: info@creative-biomart.com  Fax: 1-631-938-8127

 45-1 Ramsey Road, Shirley, NY 11967, USA

Gene ID	9817
mRNA Refseq	NM_012289
Protein Refseq	NP_036421
MIM	606016
UniProt ID	Q14145



(Tris-Glycine gel) Discontinuous SDS-PAGE (reduced) with 5% enrichment gel and 15% separation gel.

Tel: 1-631-559-9269 1-516-512-3133

Email: info@creative-biomart.com Fax: 1-631-938-8127

45-1 Ramsey Road, Shirley, NY 11967, USA