

Recombinant Human KEAP1 Protein (Ala90-Ile250), N-His tagged

Cat. No. KEAP1-3483H Lot. No. (See product label)

SPECIFICATION

Product Overview	Recombinant human KEAP1 (Ala90-Ile250) protein fused with the N-terminal His tag was expressed in E. coli.
Species	Human
Source	E.coli
ProteinLength	Ala90-Ile250
Molecular Mass	18.07 kDa
Purity	>90 % as determined by SDS-PAGE.
Notes	For research use only.
Storage	Use a manual defrost freezer and avoid repeated freeze thaw cycles. Store at 2 to 8 centigrade for one week. Store at -20 to -80 centigrade for twelve months from the date of receipt.
Storage Buffer	Supplied as solution form in PBS pH 7.5 or lyophilized from PBS pH 7.5.
Reconstitution	Reconstitute in sterile water for a stock solution.
Shipping	In general, proteins are provided as lyophilized powder. They are shipped out with

 Tel: 1-631-559-9269 1-516-512-3133

 Email: info@creative-biomart.com  Fax: 1-631-938-8127

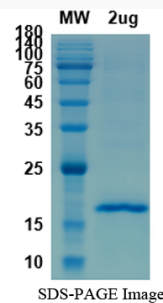
 45-1 Ramsey Road, Shirley, NY 11967, USA

blue ice unless customers require otherwise.

GENE INFORMATION

Gene Name	KEAP1 kelch-like ECH-associated protein 1 [Homo sapiens (human)]
Official Symbol	KEAP1
Synonyms	KEAP1; kelch-like ECH-associated protein 1; INrf2; KIAA0132; KLHL19; MGC1114; MGC4407; MGC9454; MGC10630; MGC20887; kelch-like protein 19; cytosolic inhibitor of Nrf2;
Gene ID	9817
mRNA Refseq	NM_012289
Protein Refseq	NP_036421
MIM	606016
UniProt ID	Q14145

SDS-PAGE



Tel: 1-631-559-9269 1-516-512-3133

Email: info@creative-biomart.com Fax: 1-631-938-8127

45-1 Ramsey Road, Shirley, NY 11967, USA