

# Recombinant Human KEAP1 Protein, Myc/DDK-tagged, C13 and N15-labeled

Cat. No. KEAP1-6142H Lot. No. (See product label)

## SPECIFICATION

### Product Overview

KEAP1 MS Standard C13 and N15-labeled recombinant protein (NP\_036421) with a C-terminal MYC/DDK tag, was expressed in HEK293 cells.

### Species

Human

### Source

HEK293

### Description

This gene encodes a protein containing KELCH-1 like domains, as well as a BTB/POZ domain. Kelch-like ECH-associated protein 1 interacts with NF-E2-related factor 2 in a redox-sensitive manner and the dissociation of the proteins in the cytoplasm is followed by transportation of NF-E2-related factor 2 to the nucleus. This interaction results in the expression of the catalytic subunit of gamma-glutamylcysteine synthetase. Two alternatively spliced transcript variants encoding the same isoform have been found for this gene.

### Molecular Mass

69.7 kDa

### AA Sequence

MQPDRPSGAGACCRFLPLQSQCEGAGDAVMYASTECKAEVTPSQHGNRTFSY  
 TLEDHTKQAFGIMNELRLSQQLCDVTLQVKYQDAPAAQFMAHKVVLASSSPVFKAM  
 FTNGLREQGMEVVSIEGIHPKVMERLIEFAYTASISMGEKCVLHVMNGAVMYQIDSV  
 VRACSDFLVQQLDPSNAIGIANFAEQIGCVELHQRAREYIYMHFGEVAKQEEFFNLS  
 HCQLVTLISRDDLNVRCSESEVFHACINWVKYDCEQRRFYVQALLRAVRCHSLTPNFL  
 QMQLQKCEILQSDSRCKDYLVKIFEELTLHKPTQVMPCRAPKVGRLIYTAGGYFRQS

 Tel: 1-631-559-9269 1-516-512-3133

 Email: [info@creative-biomart.com](mailto:info@creative-biomart.com)  Fax: 1-631-938-8127

 45-1 Ramsey Road, Shirley, NY 11967, USA

LSYLEAYNPSDGTWLRRLADLQVPRSLAGCVVGGLLYAVGGRNNSPDGNTDSSAL  
 DCYNPMTNQWSPCAPMSVPRNRIGVGVIDGHIYAVGGSHGCIHHNSVERYEPERD  
 EWHLVAPMLTRRIGVGVAVLNRLLYAVGGFDGTNRLNSAECYPERNEWRMITAM  
 NTIRSGAGVCVLHNCIYAAGGYDGDQLNSVERYDVETETWTFVAPMKHRRSALGI  
 TVHQGRIYVLGGYDGHTFLDSVECYDPDPTDWSEVTRMTSGRSGVGVAVTMEPCR  
 KQIDQQNCTCTRTRPLEQKLISEEDLAANDILDYKDDDDKV

<b>Purity</b>	> 80% as determined by SDS-PAGE and Coomassie blue staining
<b>Stability</b>	Stable for 3 months from receipt of products under proper storage and handling conditions.
<b>Storage</b>	Store at -80 centigrade. Avoid repeated freeze-thaw cycles.
<b>Concentration</b>	50 µg/mL as determined by BCA
<b>Storage Buffer</b>	100 mM glycine, 25 mM Tris-HCl, pH 7.3.

## GENE INFORMATION

<b>Gene Name</b>	KEAP1 kelch-like ECH-associated protein 1 [ Homo sapiens (human) ]
<b>Official Symbol</b>	KEAP1
<b>Synonyms</b>	KEAP1; kelch-like ECH-associated protein 1; INrf2; KIAA0132; KLHL19; MGC1114; MGC4407; MGC9454; MGC10630; MGC20887; kelch-like protein 19; cytosolic inhibitor of Nrf2;
<b>Gene ID</b>	9817
<b>mRNA Refseq</b>	NM_012289

 Tel: 1-631-559-9269 1-516-512-3133

 Email: [info@creative-biomart.com](mailto:info@creative-biomart.com)  Fax: 1-631-938-8127

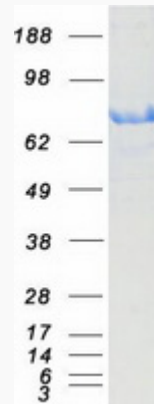
 45-1 Ramsey Road, Shirley, NY 11967, USA

**Protein Refseq** NP\_036421

**MIM** 606016

**UniProt ID** Q14145

**SDS-PAGE**



 Tel: 1-631-559-9269 1-516-512-3133

 Email: [info@creative-biomart.com](mailto:info@creative-biomart.com)  Fax: 1-631-938-8127

 45-1 Ramsey Road, Shirley, NY 11967, USA