

Recombinant Human KEAP1 protein, His-tagged

Cat. No. KEAP1-7843H Lot. No. (See product label)

SPECIFICATION

Product Overview Recombinant Human KEAP1 protein(480-624 aa), fused with N-terminal His tag, was expressed in E. coli.

Species Human

Source E.coli

ProteinLength 480-624 aa

Form The purified protein was Lyophilized from sterile PBS (58mM Na₂HPO₄, 17mM NaH₂PO₄, 68mM NaCl, pH7.4). 5 % trehalose and 5 % mannitol are added as protectant before lyophilization. The elution buffer contain 300mM imidazole.

Storage Short-term storage: Store at 2-8°C for (1-2 weeks). Long-term storage: Aliquot and store at -20°C to -80°C for up to 3 months, reconstitution with sterile water and addition of an equal volume of glycerol. Avoid repeat freeze-thaw cycles.

Purity 80%, by SDS-PAGE with Coomassie Brilliant Blue staining.

GENE INFORMATION

Official Symbol [KEAP1](#)

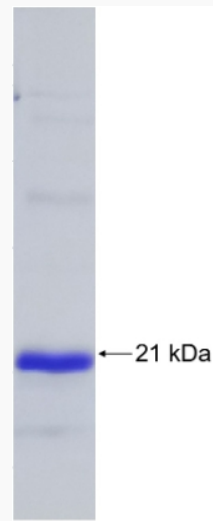
Synonyms KEAP1; kelch-like ECH-associated protein 1; INrf2; KIAA0132; KLHL19; MGC1114; MGC4407; MGC9454; MGC10630; MGC20887; kelch-like protein 19; cytosolic

 Tel: 1-631-559-9269 1-516-512-3133

 Email: info@creative-biomart.com  Fax: 1-631-938-8127

 45-1 Ramsey Road, Shirley, NY 11967, USA

inhibitor of Nrf2;

Gene ID 9817**mRNA Refseq** NM_012289**Protein Refseq** NP_036421**MIM** 606016**UniProt ID** Q14145**SDS-PAGE** Tel: 1-631-559-9269 1-516-512-3133 Email: info@creative-biomart.com  Fax: 1-631-938-8127 45-1 Ramsey Road, Shirley, NY 11967, USA