

Recombinant Human KEAP1 protein, His-SUMO-tagged

Cat. No. KEAP1-7854H Lot. No. (See product label)

SPECIFICATION

Product Overview	Recombinant Human KEAP1 protein(Q14145)(1-624aa), fused with N-terminal His and SUMO tag, was expressed in E.coli.
Species	Human
Source	E.coli
ProteinLength	1-624a.a.
Tag	His&SUMO
Form	If the delivery form is liquid, the default storage buffer is Tris/PBS-based buffer, 5%-50% glycerol. If the delivery form is lyophilized powder, the buffer before lyophilization is Tris/PBS-based buffer, 6% Trehalose, pH 8.0.
Molecular Mass	82.6 kDa
Purity	Greater than 85% as determined by SDS-PAGE.
Storage	Store at -20°C/-80°C upon receipt, aliquoting is necessary for mutiple use. Avoid repeated freeze-thaw cycles.
Reconstitution	We recommend that this vial be briefly centrifuged prior to opening to bring the contents to the bottom. Please reconstitute protein in deionized sterile water to a concentration of 0.1-1.0 mg/mL.We recommend to add 5-50% of glycerol (final

 Tel: 1-631-559-9269 1-516-512-3133

 Email: info@creative-biomart.com  Fax: 1-631-938-8127

 45-1 Ramsey Road, Shirley, NY 11967, USA

concentration) and aliquot for long-term storage at -20°C/-80°C.

AA Sequence

MQPDRPSGAGACCRFLPLQSQCEGAGDAVMYASTECKAEVTPSQHGNRTFSY
 TLEDHTKQAFGIMNELRLSQQLCDVTLQVKYQDAPAAQFMAHKVVLASSSPVFKAM
 FTNGLREQGMEVVSIEGIHPKVMERLIEFAYTASISMGEKCVLHVMNGAVMYQIDSV
 VRACSDFLVQQLDPSNAIGIANFAEQIGCVELHQRAREYIYMHFGEVAKQEEFFNLS
 HCQLVTLISRDDLNVRCSEVVFHACINWVKYDCEQRRFYVQALLRAVRCHSLTPNFL
 QMQLQKCEILQSDSRCKDYLVKIFEELTLHKPTQVMPCRAPKVGRLIYTAGGYFRQS
 LSYLEAYNPSDGTWLRRLADLQVPRSLAGCVVGGLLYAVGGRNNSPDGNTDSSAL
 DCYNPMTNQWSPCAPMSVPRNRIGVGVIDGHIYAVGGSHGCIHHNSVERYEPERD
 EWHLVAPMLTRRIGVGVAVLNRLLYAVGGFDGTNRLNSAECYPERNEWRMITAM
 NTIRSGAGVCVLHNCIYAAGGYDGGDQLNSVERYDVETETWTFVAPMKHRRSALGI
 TVHQGRIYVLGGYDGHTFLDSVECYDPDPTDWSEVTRMTSGRSGVGVAVTMEPCR
 KQIDQQNCTC

GENE INFORMATION

Gene Name [KEAP1 kelch-like ECH-associated protein 1 \[Homo sapiens \]](#)

Official Symbol [KEAP1](#)

Synonyms KEAP1; kelch-like ECH-associated protein 1; INrf2; KIAA0132; KLHL19; MGC1114; MGC4407; MGC9454; MGC10630; MGC20887; kelch-like protein 19; cytosolic inhibitor of Nrf2;

Gene ID [9817](#)

mRNA Refseq [NM_012289](#)

Protein Refseq [NP_036421](#)

 Tel: 1-631-559-9269 1-516-512-3133

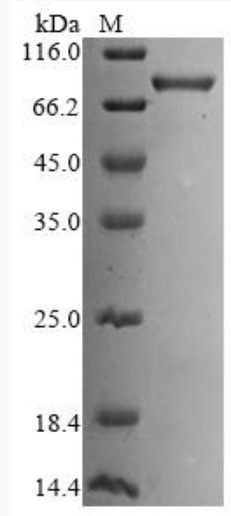
 Email: info@creative-biomart.com  Fax: 1-631-938-8127

 45-1 Ramsey Road, Shirley, NY 11967, USA

MIM 606016

UniProt ID Q14145

SDS-PAGE



 Tel: 1-631-559-9269 1-516-512-3133

 Email: info@creative-biomart.com  Fax: 1-631-938-8127

 45-1 Ramsey Road, Shirley, NY 11967, USA