

Recombinant Human KEAP1 Protein, His-tagged

Cat. No. KEAP1-830H Lot. No. (See product label)

SPECIFICATION

Product Overview	Recombinant Human KEAP1 Protein(Leu327~Cys624), fused with N-terminal His tag, was expressed in E. coli.
Species	Human
Source	E.coli
ProteinLength	Leu327~Cys624
Form	20mM Tris, 150mM NaCl, pH8.0, containing 1mM EDTA, 1mM DTT, 0.01% SKL, 5% Trehalose and Proclin300.
Molecular Mass	37kDa
Endotoxin	<1.0EU per 1µg (determined by the LAL method)
Purity	>90%
Storage	Avoid repeated freeze/thaw cycles. Store at 2-8°C for one month. Aliquot and store at -80°C for 12 months.
Reconstitution	Reconstitute in 20mM Tris, 150mM NaCl (pH8.0) to a concentration of 0.1-1.0 mg/mL. Do not vortex.

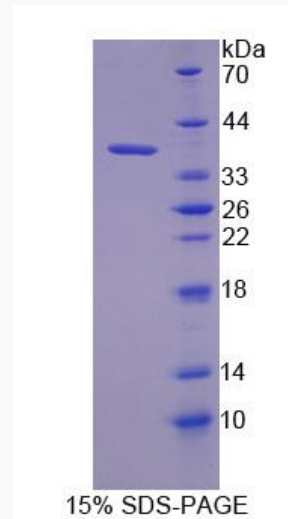
GENE INFORMATION

 Tel: 1-631-559-9269 1-516-512-3133

 Email: info@creative-biomart.com  Fax: 1-631-938-8127

 45-1 Ramsey Road, Shirley, NY 11967, USA

Gene Name	KEAP1 kelch-like ECH-associated protein 1 [Homo sapiens]
Official Symbol	KEAP1
Synonyms	KEAP1
Gene ID	9817
mRNA Refseq	NM_012289
Protein Refseq	NP_036421
MIM	606016
UniProt ID	Q14145

SDS-PAGE


Tel: 1-631-559-9269 1-516-512-3133

Email: info@creative-biomart.com Fax: 1-631-938-8127

45-1 Ramsey Road, Shirley, NY 11967, USA