

Recombinant Human KEL Protein, His-tagged

Cat. No. KEL-079H Lot. No. (See product label)

SPECIFICATION

Product Overview	Recombinant Human KEL Protein with His tag was expressed in E. coli.
Species	Human
Source	E.coli
Description	Zinc endopeptidase with endothelin-3-converting enzyme activity. Cleaves EDN1, EDN2 and EDN3, with a marked preference for EDN3.
Molecular Mass	~65 kDa
AA Sequence	<p>NFQNCGPRPCETSVCLDLRDHYLASGNTSVAPCTDFFSFACGRAKETNNSFQELAT KNKNRLRRILEVQNSWHPGSGEEKAFQFYNSCMDTLAIEAAGTGPLRQVIEELGGW RISGKWTSLNFNRTLRLLLMSQYGHFPFFRAYLGHPPASHTPVIIQIDQPEFDVPLKQ DQEQKIYAQIFREYLTYLNQLGTLGGDPSKVQEHSSLSISITSRLFQFLRPLEQRR QGKLFQMVTIDQLKEMAPAIWLSCLQATFTPMSLSPSQSLVVHDVEYLKNMSQLV EEMLLKQRDFLQSHMILGLVVTLSPALDSQFQEARRKLSQKLRELTEQPPMPARPR WMKCV EETGTFEPTLAALFVREAFGPSTRSAAMKLFTAIRDALITRLRNLPWMNEE TQNMAQDKVAQLQVEMGASEWALKPELARQEYNDIQLGSSFLQSVLSCVRSRARI VQSFLQPHPQHRWKVSPWDVNAYYSVSDHV VVPAGLLQPPFFHPGYPRAVNFGA AGSIMAHELLHIFYQLLLPGGCLACDNHALQEAHLCKLRHYAAFPLPSRTSFNDSLTF LENAADVGLAIALQAYSKRLLRHHGETVLPDLSPQQIFFRSYAQVMCRKPSPQD SHDTHSPPHLRVHGPLSSTPAFARYFRCARGALLNPSSRCQLW</p>
Purity	Transferred into competent cells and the supernatant was purified by NI column

 Tel: 1-631-559-9269 1-516-512-3133

 Email: info@creative-biomart.com  Fax: 1-631-938-8127

 45-1 Ramsey Road, Shirley, NY 11967, USA

affinity chromatography and the purity is > 85% (by SDS-PAGE).

Notes

For research use only, not for use in diagnostic procedure.

Storage

Store at 4 centigrade short term. Aliquot and store at -20 centigrade long term. Avoid freeze-thaw cycles.

Storage Buffer

PBS, 4M Urea, pH7.4

GENE INFORMATION

Gene Name

[KEL Kell blood group, metallo-endopeptidase \[Homo sapiens \(human\) \]](#)

Official Symbol

[KEL](#)

Synonyms

KEL; Kell blood group, metallo-endopeptidase; Kell blood group , Kell blood group, metalloendopeptidase; kell blood group glycoprotein; CD238; ECE3; kell blood group antigen;

Gene ID

[3792](#)

mRNA Refseq

[NM_000420](#)

Protein Refseq

[NP_000411](#)

MIM

[613883](#)

UniProt ID

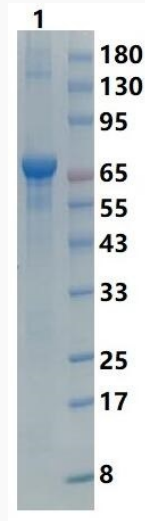
[P23276](#)

 Tel: 1-631-559-9269 1-516-512-3133

 Email: info@creative-biomart.com  Fax: 1-631-938-8127

 45-1 Ramsey Road, Shirley, NY 11967, USA

SDS-PAGE



 Tel: 1-631-559-9269 1-516-512-3133

 Email: info@creative-biomart.com  Fax: 1-631-938-8127

 45-1 Ramsey Road, Shirley, NY 11967, USA