

# Recombinant Human KEL Protein (Asn68-Ser280), N-His tagged

**Cat. No.** KEL-1228H    **Lot. No.** (See product label)

## SPECIFICATION

<b>Product Overview</b>	Recombinant Human CD238/KEL (Asn68-Ser280) fused with the N-His tag was expressed in E. coli.
<b>Species</b>	Human
<b>Source</b>	E.coli
<b>ProteinLength</b>	Asn68-Ser280
<b>Form</b>	Lyophilized powder/frozen liquid
<b>Molecular Mass</b>	26.36 kDa
<b>Purity</b>	>90% as determined by SDS-PAGE.
<b>Notes</b>	For research use only.
<b>Storage</b>	Use a manual defrost freezer and avoid repeated freeze thaw cycles. Store at 2 to 8 centigrade for one week. Store at -20 to -80 centigrade for twelve months from the date of receipt.
<b>Storage Buffer</b>	0.01M PBS, pH 7.4, 0.02% NLS
<b>Reconstitution</b>	Reconstitute in sterile water for a stock solution.

 Tel: 1-631-559-9269    1-516-512-3133

 Email: [info@creative-biomart.com](mailto:info@creative-biomart.com)     Fax: 1-631-938-8127

 45-1 Ramsey Road, Shirley, NY 11967, USA

**Shipping**

They are shipped out with dry ice/blue ice unless customers require otherwise.

**GENE INFORMATION**
**Gene Name**

KEL Kell blood group, metallo-endopeptidase [ Homo sapiens (human) ]

**Official Symbol**

KEL

**Synonyms**

KEL; Kell blood group, metallo-endopeptidase; Kell blood group, Kell blood group, metalloendopeptidase; kell blood group glycoprotein; CD238; ECE3; kell blood group antigen;

**Gene ID**

3792

**mRNA Refseq**

NM\_000420

**Protein Refseq**

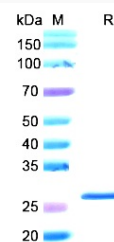
NP\_000411

**MIM**

613883

**UniProt ID**

P23276

**SDS-PAGE**


Tel: 1-631-559-9269 1-516-512-3133

Email: [info@creative-biomart.com](mailto:info@creative-biomart.com) Fax: 1-631-938-8127

45-1 Ramsey Road, Shirley, NY 11967, USA