

Recombinant Human KEL Protein (Asn68-Trp732), C-His tagged

Cat. No. KEL-4334H **Lot. No.** (See product label)

SPECIFICATION

Product Overview	Recombinant human KEL (Asn68-Trp732) fused with the C-terminal His tag was expressed in Mammalian cells.
Species	Human
Source	Mammalian Cells
ProteinLength	Asn68-Trp732
Form	Lyophilized powder/frozen liquid
Molecular Mass	73.15 kDa
Endotoxin	< 1.0 EU/μg of the protein as determined by the LAL method.
Purity	>90% as determined by SDS-PAGE.
Notes	For research use only.
Storage	Use a manual defrost freezer and avoid repeated freeze thaw cycles. Store at 2 to 8 centigrade for one week. Store at -20 to -80 centigrade for twelve months from the date of receipt.
Storage Buffer	Supplied as solution form in PBS or lyophilized from PBS.

 Tel: 1-631-559-9269 1-516-512-3133

 Email: info@creative-biomart.com  Fax: 1-631-938-8127

 45-1 Ramsey Road, Shirley, NY 11967, USA

Reconstitution Reconstitute in sterile water for a stock solution.

Shipping They are shipped out with dry ice/blue ice unless customers require otherwise.

GENE INFORMATION

Gene Name KEL Kell blood group, metallo-endopeptidase [Homo sapiens (human)]

Official Symbol KEL

Synonyms KEL; Kell blood group, metallo-endopeptidase; Kell blood group, Kell blood group, metalloendopeptidase; kell blood group glycoprotein; CD238; ECE3; kell blood group antigen;

Gene ID 3792

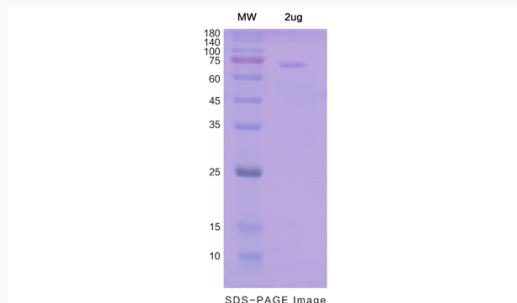
mRNA Refseq NM_000420

Protein Refseq NP_000411

MIM 613883

UniProt ID P23276

SDS-PAGE



 Tel: 1-631-559-9269 1-516-512-3133

 Email: info@creative-biomart.com  Fax: 1-631-938-8127

 45-1 Ramsey Road, Shirley, NY 11967, USA