

# Recombinant Full Length Human KHDRBS1 Protein, C-Flag-tagged

**Cat. No.** KHDRBS1-312HFL    **Lot. No.** (See product label)

## SPECIFICATION

<b>Product Overview</b>	Recombinant Full Length Human KHDRBS1 Protein, fused to Flag-tag at C-terminus, was expressed in Mammalian cells.
<b>Species</b>	Human
<b>Source</b>	Mammalian Cells
<b>Description</b>	This gene encodes a member of the K homology domain-containing, RNA-binding, signal transduction-associated protein family. The encoded protein appears to have many functions and may be involved in a variety of cellular processes, including alternative splicing, cell cycle regulation, RNA 3'-end formation, tumorigenesis, and regulation of human immunodeficiency virus gene expression. Alternative splicing results in multiple transcript variants.
<b>Form</b>	25 mM Tris HCl, pH 7.3, 100 mM glycine, 10% glycerol.
<b>Molecular Mass</b>	48 kDa
<b>AA Sequence</b>	<p>MQRRDDPAARMSRSSGRSGSMDPSGAHPSVRQTTPSRQPPLPHRSRGGGGGSRG  GARASPATQPPPLLPPS ATGPDATVGGPAPTPLLPPSATASVKMEPENKYLPNELMA  EKDSLDPSTHAMQLLTAEIEKIQKGDSSKKD DEENYLDLFSHKNMKLERVLIPVKQ  YPKFNFVGKILGPQGNTIKRLQEETGAKISVLGKGSMDKAKEE ELRKGGDPKYAH  LNMDLHVFIIEVFGPPCEAYALMAHAMEEVKKFLVPDMMDDICQEQLFLELSYLNQVP  EP SRGRGVPVRGRGAAPPPPPVPRGRGVGPPRGALVRGTPVRGAI TRGATVTRG</p>

 Tel: 1-631-559-9269    1-516-512-3133

 Email: [info@creative-biomart.com](mailto:info@creative-biomart.com)     Fax: 1-631-938-8127

 45-1 Ramsey Road, Shirley, NY 11967, USA

VPPPPTVRGAPAPRARTA GIQRIPLPPPAPETYEEYGYDDTYAEQSYEGYEGYYS  
 QSQGDSEYYDYGHGEVQDSYEAYGQDDWNGTR  
 PSLKAPPARPVKGAYREHPYGRYTRTRPLEQKLISEEDLAANDILDYKDDDDKV

<b>Purity</b>	> 80% as determined by SDS-PAGE and Coomassie blue staining.
<b>Stability</b>	Stable for 12 months from the date of receipt of the product under proper storage and handling conditions. Avoid repeated freeze-thaw cycles.
<b>Storage</b>	Store at -80 centigrade.
<b>Concentration</b>	>50 ug/mL as determined by microplate BCA method.
<b>Preparation</b>	Recombinant protein was captured through anti-DDK affinity column followed by conventional chromatography steps.
<b>Protein Families</b>	Transcription Factors
<b>Full Length</b>	Full L.

## GENE INFORMATION

<b>Gene Name</b>	<a href="#">KHDRBS1 KH RNA binding domain containing, signal transduction associated 1 [ Homo sapiens (human) ]</a>
<b>Official Symbol</b>	<a href="#">KHDRBS1</a>
<b>Synonyms</b>	p62; p68; Sam68
<b>Gene ID</b>	<a href="#">10657</a>

 Tel: 1-631-559-9269 1-516-512-3133

 Email: [info@creative-biomart.com](mailto:info@creative-biomart.com)  Fax: 1-631-938-8127

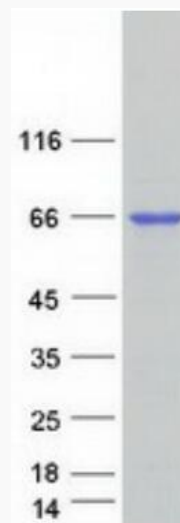
 45-1 Ramsey Road, Shirley, NY 11967, USA

mRNA Refseq [NM\\_006559.3](#)

Protein Refseq [NP\\_006550.1](#)

MIM [602489](#)

UniProt ID [Q07666](#)



Coomassie blue staining of purified KHDRBS1 protein.

 Tel: 1-631-559-9269 1-516-512-3133

 Email: [info@creative-biomart.com](mailto:info@creative-biomart.com)  Fax: 1-631-938-8127

 45-1 Ramsey Road, Shirley, NY 11967, USA