

Recombinant Human KIAA0319L protein, GST-tagged

Cat. No. KIAA0319L-27H Lot. No. (See product label)

SPECIFICATION

Product Overview	Recombinant Human KIAA0319L protein is produced by Wheat Germ expression system. This protein is fused with a GST-tag at N-terminal.
Species	Human
Source	Wheat Germ
Protein Length	1 a.a. - 1049 a.a
Form	50 mM Tris-HCl, 10 mM reduced Glutathione, pH=8.0 in the elution buffer.
Molecular Mass	142 kDa
AA Sequence	<p>MEKRLGVKPNPASWILSGYYWQTSAKWLRSLYLFYTCFCFSVLWLSTDASESRCQ QGKTQFGVGLRSGGENHLWLLEGTPSLQSCLAACCQDSACHVFWWLEGMCIQAD CSR PQSCRAF RTHSSNSMLVFLKKFQTADDLGFLPEDDVPHLLGLGWNWASWRQS PPRAALRP AVSSSDQQSLIRKLQKRGSPSDVVTPIVTQH SKVND SNELGGLTTSGSA EVHKAITISSPLTTDLTAELSGGPKNVSVQPEISEGLATTPSTQQVKSSEKTQIAVPQP VAPSYSYATPTPQAS FQSTSAPYPVIKELVVSAGESVQITLPKNEVQLNAYVLQEPPK GETYTYDWQLITHPRDYS GEMEGKHSQILKLSKLT PGLYEFKVIVEGQNAHGEGYVN VTVKPEPRKNRPPIAIVSPQFQEISLPTTSTVIDGSQSTDDDKIVQYHWEELKGPLRE EKISED TAILKLSKLVPGNYTFS LTVVDS DGATNSTTANLTVNKAVDYPPVANAGPNQ VITLPQNSITLFGNQSTDDHGITSYEWLS PSSKGVVEMQGVRTPTLQLSAMQEGD YTYQLTVTD TIGQQATAQVTVIVQPENKPPQADAGPDKELTLPVDSTTLDGSKSSD DQKIISYLWEKTQGPDGVQLENANSSVATVTGLQVGT YVFTLTVKDERNLQSQSSV</p>

Tel: 1-631-559-9269 1-516-512-3133

Email: info@creative-biomart.com Fax: 1-631-938-8127

45-1 Ramsey Road, Shirley, NY 11967, USA



NVIVKEEINKPPIAKITGNVVITLPTSTAELDGSKSSDDKGIVSYLWTRDEGSPAAGEV
 LNHSDDHHPILFLSNLVEGTYTFHLKVTDAGESDTRTTVEVKPDPKRKNNLVEIILDIN
 VSQALTERLKGMFIRQIGVLLGVLDSDIIVQKIQPYTEQSTKMVFFVQNEPPHQIFKGHE
 VAAMLKSELRKQKADFLIFRALEVNTVTCQLNCSDHGHCDSTFKRCICDPFWMENFI
 KVQLRDGDSNCEWSVLYVIIATFVIVVALGILSWTVICCCCKRQKGKPKRKSXYKILDAT
 DQESLELKPTSRAGIKQKGLLLSSSLMHSESELDSDDAIFTWPDREKGLLHGQNGS
 VPNGQTPLKARSPREEIL

Applications

Enzyme-linked Immunoabsorbent Assay
 Western Blot (Recombinant protein)
 Antibody Production
 Protein Array

Notes

Best use within three months from the date of receipt of this protein.

Storage

Store at -80 centigrade. Aliquot to avoid repeated freezing and thawing.

Reconstitution

Reconstitute at 100µg/ml in sterile PBS.

GENE INFORMATION

Gene Name

KIAA0319L KIAA0319-like [Homo sapiens]

Official Symbol

KIAA0319L

Synonyms

KIAA0319L; KIAA0319-like; KIAA1837; polycystic kidney disease 1-related;
 FLJ44532;

Gene ID

79932

mRNA Refseq

NM_024874

Tel: 1-631-559-9269 1-516-512-3133

Email: info@creative-biomart.com Fax: 1-631-938-8127

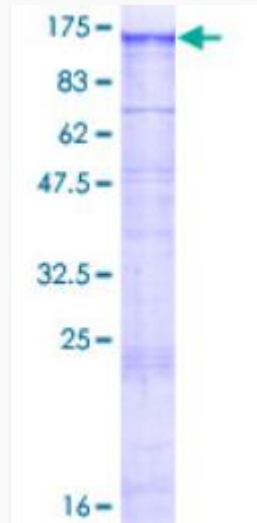
45-1 Ramsey Road, Shirley, NY 11967, USA

Protein Refseq NP_079150

MIM 613535

UniProt ID Q8IZA0

KIAA0319L-27H, 1



12.5% SDS-PAGE Stained with Coomassie Blue.

 Tel: 1-631-559-9269 1-516-512-3133

 Email: info@creative-biomart.com  Fax: 1-631-938-8127

 45-1 Ramsey Road, Shirley, NY 11967, USA