

## Recombinant Human KIAA0319L protein, His-tagged

Cat. No. KIAA0319L-324H Lot. No. (See product label)

### SPECIFICATION

|                         |   |
|-------------------------|---|
| <b>Product Overview</b> | Recombinant Human KIAA0319L protein(Q8IZA0)(601-800 aa), fused with C-terminal His tag, was expressed in HEK293.  |
| <b>Species</b>          | Human   |
| <b>Source</b>           | HEK293  |
| <b>ProteinLength</b>    | 601-800 aa  |
| <b>Form</b>             | Phosphate buffered saline   |
| <b>Molecular Mass</b>   | 24 kDa  |
| <b>AASequence</b>       | ADAGPDKELTLPVDSTTLDGSKSSDDQKIISYLWEKTQGPDGVQLENANSSVATVTG<br>LQVGTYVFTLTVKDERNLQSQSSVNVIVKKEINKPPIAKITGNVVITLPTSTAELDGSK<br>SSDDKGIVSYLWTRDEGSPAAGEVLNHSDDHHPILFLSNLVEGTYTFHLKVTDAGKES<br>DTRTTVEVKPDPKNNLVEIILDINV |
| <b>Storage</b>          | Store at -20°C/-80°C upon receipt, aliquoting is necessary for mutiple use. Avoid repeated freeze-thaw cycles.  |
| <b>Reconstitution</b>   | It is recommended that sterile water be added to the vial to prepare a stock solution of 0.2 ug/ul. Centrifuge the vial at 4°C before opening to recover the entire contents.                                       |

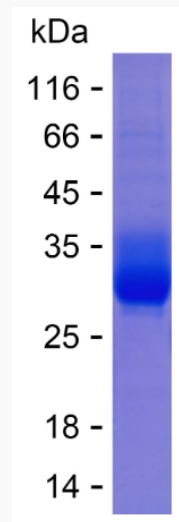
### GENE INFORMATION

 Tel: 1-631-559-9269 1-516-512-3133

 Email: [info@creative-biomart.com](mailto:info@creative-biomart.com)  Fax: 1-631-938-8127

 45-1 Ramsey Road, Shirley, NY 11967, USA

|                        |   |
|------------------------|---|
| <b>Gene Name</b>       | KIAA0319L KIAA0319-like [ Homo sapiens ]  |
| <b>Official Symbol</b> | KIAA0319L   |
| <b>Synonyms</b>        | KIAA0319L; KIAA0319-like; dyslexia-associated protein KIAA0319-like protein; KIAA1837; polycystic kidney disease 1-related; FLJ44532; |
| <b>Gene ID</b>         | 79932   |
| <b>mRNA Refseq</b>     | NM_024874   |
| <b>Protein Refseq</b>  | NP_079150   |
| <b>MIM</b>             | 613535  |
| <b>UniProt ID</b>      | Q8IZA0  |

**SDS-PAGE**


 Tel: 1-631-559-9269 1-516-512-3133

 Email: [info@creative-biomart.com](mailto:info@creative-biomart.com)  Fax: 1-631-938-8127

 45-1 Ramsey Road, Shirley, NY 11967, USA