

Recombinant Human KIAA0825 Protein, GST-Tagged

Cat. No. KIAA0825-0088H Lot. No. (See product label)

SPECIFICATION

Product Overview	Human C5orf36 full-length ORF (NP_775936.1, 1 a.a. - 324 a.a.) recombinant protein with GST-tag at N-terminal.
Species	Human
Source	Wheat Germ
Description	KIAA0825 (KIAA0825) is a Protein Coding gene.
Molecular Mass	64 kDa
AA Sequence	MDWDDEYSHNSFDLHCLLNSFPGDLEFEQIFSDIDEKIEQNAASIKHCIKEIQSEINKQ CPGVQLQTTTDCFEWLTNYNYSTSESSFISHGDLIKFFKTLQDLLKNEQNQEEMTLD LLWDLSCHSSVSFPSTLSGTSFHFLSRTSLHSVEDNSSMDVKSMWDDIRLHLRRFL VSKLQSHNEINNSQQKILLKKQCLQQLFLYPESEVIIKYQNIQNKLLANLLWNCFPSY NRDSNLDVIAHGYQSTMLKLYSVIKEDFNTLCEILAPSSMVKFIKETYLDTVTEEMAKF LENFCELQFRENAVRVVKTSKSSSKHRGAVHALG
Applications	Enzyme-linked Immunoabsorbent Assay Western Blot (Recombinant protein) Antibody Production Protein Array
Storage	Store at -80 centigrade. Aliquot to avoid repeated freezing and thawing.

 Tel: 1-631-559-9269 1-516-512-3133

 Email: info@creative-biomart.com  Fax: 1-631-938-8127

 45-1 Ramsey Road, Shirley, NY 11967, USA

Storage Buffer 50 mM Tris-HCl, 10 mM reduced Glutathione, pH=8.0 in the elution buffer.

GENE INFORMATION

Gene Name KIAA0825 KIAA0825 [Homo sapiens]

Official Symbol KIAA0825

Synonyms KIAA0825; C5orf36, chromosome 5 open reading frame 36; uncharacterized protein KIAA0825; DKFZp686F0372; MGC34713; C5orf36; FLJ27431;

Gene ID 285600

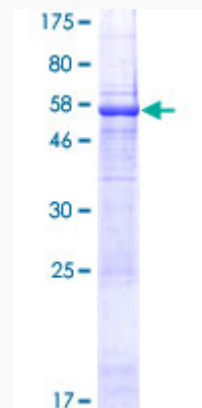
mRNA Refseq NM_001145678

Protein Refseq NP_001139150

MIM 617266

UniProt ID Q8IV33

Quality Control Testing



 Tel: 1-631-559-9269 1-516-512-3133

 Email: info@creative-biomart.com  Fax: 1-631-938-8127

 45-1 Ramsey Road, Shirley, NY 11967, USA



12.5% SDS-PAGE Stained with Coomassie Blue.

 Tel: 1-631-559-9269 1-516-512-3133

 Email: info@creative-biomart.com  Fax: 1-631-938-8127

 45-1 Ramsey Road, Shirley, NY 11967, USA