

# Recombinant Human KIAA1958 Protein, Myc/DDK-tagged, C13 and N15-labeled

**Cat. No.** KIAA1958-5316H    **Lot. No.** (See product label)

## SPECIFICATION

<b>Product Overview</b>	KIAA1958 MS Standard C13 and N15-labeled recombinant protein (NP_597722) with a C-terminal MYC/DDK tag, was expressed in HEK293 cells.
<b>Species</b>	Human
<b>Source</b>	HEK293
<b>Description</b>	KIAA1958 (KIAA1958) is a Protein Coding gene. Diseases associated with KIAA1958 include Invasive Bladder Transitional Cell Carcinoma. An important paralog of this gene is ZMYM4.
<b>Molecular Mass</b>	79.2 kDa
<b>AA Sequence</b>	<p>MEDCLHTSSENLSKLVSWAHSHGTICSLIPNLKHLLEGGSHGNLTAMWGCSAGHAY  HWPLTATCRAGSQERVCFQDNRSFNDSPSIIGVPSETQTSPVERYPGRPVKAKLD  CNRTRDSCDFSYCSEPELDETVEEYEDENTLFDLMVCESSVTDESDSFEPQTQRP  QSIARKRPGVVPSSLHSSSQTMVDECSNDVIKKIKQEIPEDYYIVANAELTGGVDG  PALS LTQMAKPKPQTHAGPSCVGS AKLIPHV TSAISTELDPHGMSASPSVISRPVQK  TARVSLASPNRGPPGTHGTNQQVAMQMPVSTSHPNKQISIPLSALQLPGQDEQVAS  EEFLSHLPSQVSSCEVALSPSVNTEPEVSSSQQPPVAPAITTEATAQCIPAYSTKLN  KFPVFNINDDLNDLCTSAVSPNTTKATRYALNVWRYWCMTNGLKDHTDITKIPAVKL  NELLENFYVTVKKSDGSDFLATSLHAIRRGLDRILKNAGVGF SITSSTFSSTKKLKEK  LWVLSKAGMSGARSRNIVYFSL SDEEEMWQAGCLGDDSPITLLSTVVKYNSQYLM</p>

 Tel: 1-631-559-9269    1-516-512-3133

 Email: [info@creative-biomart.com](mailto:info@creative-biomart.com)     Fax: 1-631-938-8127

 45-1 Ramsey Road, Shirley, NY 11967, USA

RTLQEHADLMYGDIELLKDPQNPYPFARTDSVKRESRSGSTRVCHGKIYHEHSRGGH  
 KQCPYCLLYKMYIHRPPTQMEAKSPFYLTARKEATDMGSVWYEEQRMGLRSLRGI  
 VPNLAKKVKLENCENFTFVSFTQVSRRLGSHSCCQTRTRPLEQKLISEEDLAANDILD  
 YKDDDDKV

**Purity** > 80% as determined by SDS-PAGE and Coomassie blue staining

**Stability** Stable for 3 months from receipt of products under proper storage and handling conditions.

**Storage** Store at -80 centigrade. Avoid repeated freeze-thaw cycles.

**Concentration** 50 µg/mL as determined by BCA

**Storage Buffer** 100 mM glycine, 25 mM Tris-HCl, pH 7.3.

## GENE INFORMATION

**Gene Name** KIAA1958 KIAA1958 [ Homo sapiens (human) ]

**Official Symbol** KIAA1958

**Synonyms** KIAA1958; uncharacterized protein KIAA1958; FLJ39294; MGC142075;

**Gene ID** 158405

**mRNA Refseq** NM\_133465

**Protein Refseq** NP\_597722

**MIM** 617390

 Tel: 1-631-559-9269 1-516-512-3133

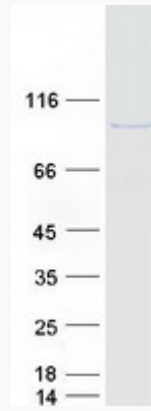
 Email: [info@creative-biomart.com](mailto:info@creative-biomart.com)  Fax: 1-631-938-8127

 45-1 Ramsey Road, Shirley, NY 11967, USA

UniProt ID

Q8N8K9

SDS-PAGE



 Tel: 1-631-559-9269 1-516-512-3133

 Email: [info@creative-biomart.com](mailto:info@creative-biomart.com)  Fax: 1-631-938-8127

 45-1 Ramsey Road, Shirley, NY 11967, USA