

## Recombinant Human KIDINS220 protein, GST-tagged

**Cat. No.** KIDINS220-32H    **Lot. No.** (See product label)

### SPECIFICATION

|                         |  |
|-------------------------|--|
| <b>Product Overview</b> | Recombinant Human KIDINS220(1374 - 1672 aa) fused with GST tag was expressed in E. coli.   |
| <b>Species</b>          | Human  |
| <b>Source</b>           | E.coli   |
| <b>ProteinLength</b>    | 1374-1672 a.a.   |
| <b>Description</b>      | This gene encodes a transmembrane protein that is preferentially expressed in the nervous system where it controls neuronal cell survival, differentiation into axons and dendrites, and synaptic plasticity. The encoded protein interacts with membrane receptors, cytosolic signaling components, and cytoskeletal proteins, serving as a scaffold that mediates crosstalk between the neurotrophin pathway and several other intracellular signaling pathways. Aberrant expression of this gene is associated with the onset of various neuropsychiatric disorders and neurodegenerative diseases, including Alzheimer's disease. Naturally occurring mutations in this gene are associated with a syndrome characterized by spastic paraplegia, intellectual disability, nystagmus and obesity. Alternative splicing results in multiple transcript variants. |
| <b>Form</b>             | The purified protein was Lyophilized from sterile PBS (58mM Na <sub>2</sub> HPO <sub>4</sub> , 17mM NaH <sub>2</sub> PO <sub>4</sub> , 68mM NaCl, pH8.). Normally 5 % - 8 % trehalose and mannitol are added as protectants before lyophilization.   |
| <b>AA Sequence</b>      | LDPITEEDEKSDQSGSKLLPGKKSSERSSSLFQTDLKLGSGRLRYQKLPSDEDESGTE   |

 Tel: 1-631-559-9269    1-516-512-3133

 Email: [info@creative-biomart.com](mailto:info@creative-biomart.com)     Fax: 1-631-938-8127

 45-1 Ramsey Road, Shirley, NY 11967, USA

ESDNTPLLKDDKDRKAEGKVERVPKSPEHSAEPIRTFIKAKEYLSDALLDKKDSSDS  
 GVRSSSESSPNHSLHNEVADDSQLEKANLIELEDDSHSGKRGIPHSLSGLQDPPIARM  
 SICSEDKKSPSECSLIASSPEENWPACQKAYNLNRTPTSTVTLNNSAPANRANQNF  
 DEMEGIRETSQVILRPSSSPNPTTIQENENLKSMTHKRSQRSSYTRLSKDPPELHAAA  
 SSESTGFGEERESIL

**Purity** 85%, by SDS-PAGE with Coomassie Brilliant Blue staining.

**Stability** Store for up to 12 months at -20 centigrade to -80 centigrade as lyophilized powder.

**Storage** Short-term storage: Store at 2-8 centigrade for two weeks.  
 Long-term storage: Aliquot and store at -20 centigrade to -80 centigrade for up to 6 months, buffer containing 50% glycerol is recommended for reconstitution. Avoid repeat freeze-thaw cycles.

**Reconstitution** Reconstitute at 0.25 g/μl in 200 μl sterile water for short-term storage.  
 Reconstitution with 200 μl 50% glycerol solution is recommended for longer term storage.  
 Note: Centrifuge vial before opening. When reconstituting, gently pipet and wash down the sides of the vial to ensure full recovery of the protein into solution.

## GENE INFORMATION

**Gene Name** KIDINS220 kinase D-interacting substrate, 220kDa [ Homo sapiens ]

**Official Symbol** KIDINS220

**Synonyms** KIDINS220; kinase D-interacting substrate, 220kDa; kinase D-interacting substrate of 220 kDa; ankyrin repeat rich membrane spanning protein; ARMS; ankyrin repeat-rich membrane spanning; ankyrin repeat-rich membrane-spanning protein; MGC163482;

 Tel: 1-631-559-9269 1-516-512-3133

 Email: [info@creative-biomart.com](mailto:info@creative-biomart.com)  Fax: 1-631-938-8127

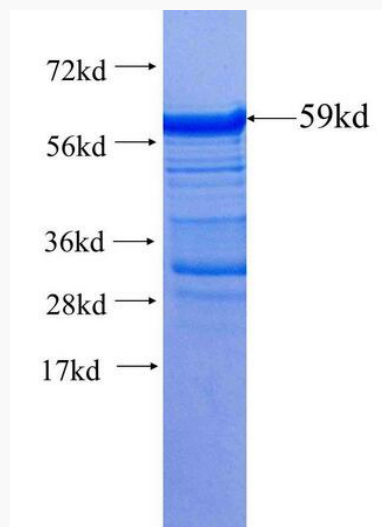
 45-1 Ramsey Road, Shirley, NY 11967, USA

Gene ID 57498

mRNA Refseq NM\_020738

Protein Refseq NP\_065789

UniProt ID Q9ULH0



Tel: 1-631-559-9269 1-516-512-3133

Email: [info@creative-biomart.com](mailto:info@creative-biomart.com) Fax: 1-631-938-8127

45-1 Ramsey Road, Shirley, NY 11967, USA