

Active Recombinant Human KIF11 Protein, Myc/DDK-tagged

Cat. No. KIF11-01H Lot. No. (See product label)

SPECIFICATION

Product Overview	Recombinant protein of human kinesin family member 11 (KIF11) with a C-Myc/DDK tag was expressed in HEK293T.
Species	Human
Source	HEK293
Description	This gene encodes a motor protein that belongs to the kinesin-like protein family. Members of this protein family are known to be involved in various kinds of spindle dynamics. The function of this gene product includes chromosome positioning, centrosome separation and establishing a bipolar spindle during cell mitosis.
Bio-activity	Enzyme substrate.
Molecular Mass	119 kDa
Purity	> 80% as determined by SDS-PAGE and Coomassie blue staining
Stability	Stable for 12 months from the date of receipt of the product under proper storage and handling conditions. Avoid repeated freeze-thaw cycles.
Storage	Store at -80 centigrade.
Concentration	>50 µg/mL as determined by microplate BCA method

 Tel: 1-631-559-9269 1-516-512-3133

 Email: info@creative-biomart.com  Fax: 1-631-938-8127

 45-1 Ramsey Road, Shirley, NY 11967, USA

Storage Buffer 25 mM Tris.HCl, pH 7.3, 100 mM glycine, 10% glycerol

GENE INFORMATION

Gene Name KIF11 kinesin family member 11 [Homo sapiens (human)]

Official Symbol KIF11

Synonyms KIF11; kinesin family member 11; EG5; HKSP; KNSL1; MCLMR; TRIP5; kinesin-like protein KIF11; TR-interacting protein 5; TRIP-5; kinesin-like protein 1; kinesin-like spindle protein HKSP; kinesin-related motor protein Eg5; thyroid receptor-interacting protein 5

Gene ID 3832

mRNA Refseq NM_004523

Protein Refseq NP_004514

MIM 148760

UniProt ID P52732

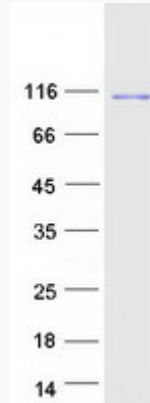
 Tel: 1-631-559-9269 1-516-512-3133

 Email: info@creative-biomart.com  Fax: 1-631-938-8127

 45-1 Ramsey Road, Shirley, NY 11967, USA



SDS-PAGE



Tel: 1-631-559-9269 1-516-512-3133

Email: info@creative-biomart.com Fax: 1-631-938-8127

45-1 Ramsey Road, Shirley, NY 11967, USA