

Active Recombinant Full Length Human KIF11 Protein, C-Flag-tagged

Cat. No. KIF11-158HFL **Lot. No.** (See product label)

SPECIFICATION

Product Overview	Recombinant Full Length Human KIF11 Protein, fused to Flag-tag at C-terminus, was expressed in Mammalian cells.
Species	Human
Source	Mammalian Cells
Description	This gene encodes a motor protein that belongs to the kinesin-like protein family. Members of this protein family are known to be involved in various kinds of spindle dynamics. The function of this gene product includes chromosome positioning, centrosome separation and establishing a bipolar spindle during cell mitosis.
Form	25 mM Tris HCl, pH 7.3, 100 mM glycine, 10% glycerol.
Bio-activity	Enzyme substrate
Molecular Mass	119 kDa
AA Sequence	MASQPNSSAKKKKEEKGNIQVVVRCRPFNLAERKASAHSIVECDPVRKEVSVRTGG LADKSSRKTYTFDM VFGASTKQIDVYRSVVCPIILDEVIMGYNCTIFAYGQTGTGKTF TMEGERSPNEEYTWEEEDPLAGIIPRTL HQIFEKLTDNNGTEFSVKVSLLEIYNEELFDL LNPSSDVSERLQMFDDPRNKRGVVIKGLEEITVHNKDEV YQILEKGAAKRTTAATLM NAYSSRSHSVFSVTIHMKETTIDGEELVKIGKLNLDLAGSENIGRSGAVDK RAREA GNINQSLTLGRVITALVERTPHVPYRESKLTTRILQDSLGGRTTRTSIIATISPASLNLEE

 Tel: 1-631-559-9269 1-516-512-3133

 Email: info@creative-biomart.com  Fax: 1-631-938-8127

 45-1 Ramsey Road, Shirley, NY 11967, USA

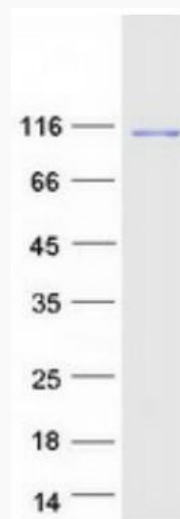
TLSTL EYAHRAKNILNKPEVFNQKLTKKALIKYEYTEEIERLKRDLAAAREKNGVYISEEN
 FRVMSGKLTVQEEQIV ELIEKIGAVEEELNRVTELFMDNKNELDQCKSDLQNKQTQEL
 ETTQKHLQETKLQLVKEEYITSALESTEE KLHDAASKLLNTVEETTKDVSGLHSKLDR
 KKAVDQHNAAEQDIFGKNLNSLFNNMEELIKDGSSKQKAML EVHKTLFGNLLSSSV
 SALDTITTVALGSLTSIPENVSTHVSQIFNMILKEQSLAAESKTVLQELINVLKT DLLSS
 LEMILSPTVVSILKINSQLKHIFKTSKSLTVADKIEDQKKELDGFLSILCNNLHELQENTICS
 LVES QKQCGNLTEDLKTIKQTHSQELCKLMNLWTERFCALEEKCENIQKPLSSVQE
 NIQQKSKDIVNKMTFHSQ KFCADSDGFSQELRNFNQEGTKLVEESVKHSDKLNGL
 EKISQETEQRCESLNTRTVYFSEQWVSSLNER EQELHNLLEVVSQCCEASSSDITE
 KSDGRKAAHEKQHNIFLDQMTIDEDKLIQNLNETIKIGLTKLN CFLEQDLKLDIPT
 GTTPQRKSYLYPSTLVRTEPREHLLDQLKRKQPELLMMLNCSENNKEETIPDVDVEE
 AVLGQYTEEPLSQEPSVDAGVDCSSIGGVPFFQHKKSHGKDKENRGINTLERSKVE
 ETTEHLVTKSRLPL
 RAQINLTRTRPLEQKLISEEDLAANDILDYKDDDDKV

Purity	> 80% as determined by SDS-PAGE and Coomassie blue staining.
Stability	Stable for 12 months from the date of receipt of the product under proper storage and handling conditions. Avoid repeated freeze-thaw cycles.
Storage	Store at -80 centigrade.
Concentration	>50 ug/mL as determined by microplate BCA method.
Preparation	Recombinant protein was captured through anti-DDK affinity column followed by conventional chromatography steps.
Protein Families	Druggable Genome
Full Length	Full L.

 Tel: 1-631-559-9269 1-516-512-3133

 Email: info@creative-biomart.com
 Fax: 1-631-938-8127

 45-1 Ramsey Road, Shirley, NY 11967, USA

GENE INFORMATION**Gene Name** KIF11 kinesin family member 11 [Homo sapiens (human)]**Official Symbol** KIF11**Synonyms** EG5; HKSP; KNSL1; MCLMR; TRIP5**Gene ID** 3832**mRNA Refseq** NM_004523.4**Protein Refseq** NP_004514.2**MIM** 148760**UniProt ID** P52732 Tel: 1-631-559-9269 1-516-512-3133 Email: info@creative-biomart.com  Fax: 1-631-938-8127 45-1 Ramsey Road, Shirley, NY 11967, USA



Coomassie blue staining of purified KIF11 protein.

 Tel: 1-631-559-9269 1-516-512-3133

 Email: info@creative-biomart.com  Fax: 1-631-938-8127

 45-1 Ramsey Road, Shirley, NY 11967, USA