

Recombinant Human KIF11 Protein (Met1-Lys368), N-His tagged

Cat. No. KIF11-3295H Lot. No. (See product label)

SPECIFICATION

Product Overview	Recombinant human KIF11 (Met1-Lys368) protein fused with the N-terminal His tag was expressed in E. coli.
Species	Human
Source	E.coli
ProteinLength	Met1-Lys368
Molecular Mass	43.89 kDa
Purity	>90 % as determined by SDS-PAGE.
Notes	For research use only.
Storage	Use a manual defrost freezer and avoid repeated freeze thaw cycles. Store at 2 to 8 centigrade for one week. Store at -20 to -80 centigrade for twelve months from the date of receipt.
Storage Buffer	Supplied as solution form in PBS, pH 7.5 or lyophilized from PBS, pH 7.5.
Reconstitution	Reconstitute in sterile water for a stock solution.
Shipping	In general, proteins are provided as lyophilized powder/frozen liquid. They are

 Tel: 1-631-559-9269 1-516-512-3133

 Email: info@creative-biomart.com  Fax: 1-631-938-8127

 45-1 Ramsey Road, Shirley, NY 11967, USA

shipped out with dry ice/blue ice unless customers require otherwise.

GENE INFORMATION

Gene Name KIF11 kinesin family member 11 [Homo sapiens (human)]

Official Symbol KIF11

Synonyms KIF11; kinesin family member 11; kinesin like 1, KNSL1; kinesin-like protein KIF11; Eg5; HKSP; TRIP5; TRIP-5; kinesin-like protein 1; TR-interacting protein 5; kinesin-like spindle protein HKSP; kinesin-related motor protein Eg5; thyroid receptor-interacting protein 5; EG5; KNSL1; MCLMR;

Gene ID 3832

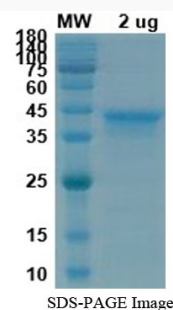
mRNA Refseq NM_004523

Protein Refseq NP_004514

MIM 148760

UniProt ID P52732

SDS-PAGE



Tel: 1-631-559-9269 1-516-512-3133

Email: info@creative-biomart.com Fax: 1-631-938-8127

45-1 Ramsey Road, Shirley, NY 11967, USA