

Recombinant Human KIF16B Protein, Myc/DDK-tagged, C13 and N15-labeled

Cat. No. KIF16B-1737H Lot. No. (See product label)

SPECIFICATION

Product Overview	KIF16B MS Standard C13 and N15-labeled recombinant protein (NP_078980) with a C-terminal MYC/DDK tag, was expressed in HEK293 cells.
Species	Human
Source	HEK293
Description	The protein encoded by this gene is a kinesin-like protein that may be involved in intracellular trafficking. Three transcript variants encoding different isoforms have been found for this gene.
Molecular Mass	152.5 kDa
AA Sequence	MASVKVAVRVRPMPNRREKDLEAKFIIQMEKSKTTITNLKIPEGGTGDSEGRERTKTFTY DFSFYADTKSPDYVSQEMVFKTLGTDVVKSAFEGYNACVFAYGQTGSGKSYTMM GNSGDSGLIPRICEGLFSRINETTRWDEASFRTEVSYLEIYNERVRDLLRRKSSKTFN LRVREHPKEGPYVEDLSKHLVQNYGDVEELMDAGNINRTTAATGMNDVSSRSHAIF TIKFTQAKFDSEMP CETVSKIHLVLDLAGSERADATGATGVRLKEGGNINKSLVTLGNV ISALADLSQDAANTLAKKKQVFVYPYRDSVLTWLLKDSLGGNSKTIMIATISPADVNYG ETLSTLRYANRAKNIINKPTINEDANVKLIRELRAEIARLKTLLAQQNQIALLDSPALS MEEKLQQNEARVQELTKEWTKWNETQNILKEQTLALRKEGIGVVLDSELPHLIGID DDLLSTGIILYHLKEGQTYVGRDDASTEQDIVLHGLDLESEHCIFENIGGTVTLIPLSGS QCSVNGVQIVEATHLNQGAVILLGRTNMFRFNHPKEAAKLREKRKSGLLSSFSLSMT

Tel: 1-631-559-9269 1-516-512-3133

Email: info@creative-biomart.com Fax: 1-631-938-8127

45-1 Ramsey Road, Shirley, NY 11967, USA

DLSKSRENLSAVMLYNPGLEFERQQREELEKLESKRKLIEMEEKQKSDKAELERM
 QQEVETQRKETEIVQLQIRKQEEESLKRSSFHIEKLLKDLAEKEKFEEERLREQQIE
 LQKKRQEEETFLRVQEELQRLKELNNEKAQEKQIFQELDQLQKEKDEQYAKLELEK
 KRLEEQEKQVMLVAHLEEQLREKQEMIQLLRGGEVQWVEEEKRDLEGIRESLLRV
 KEARAGGDEDGEELEKAQLRFFFEFKRRQLVCLVNLEKDLVQQKDILKKEVQEEQIE
 ECLKCEHDKESRLLKHDVTDVTEVPQDFEKIKPVEYRLQYKERQLQYLLQNHLP
 TLLEEKQRAFEILDRGPLSLDNTLYQVEKEMEEKEEQLAQYQANANQLQKLQATFEF
 TANIARQEEKVRKKEKEILESREKQQREALERALARLERRHSALQRHSTLGMEIEEQ
 RQKLASLNSGSREQSGLQASLEAEQEALEKDQERLEYEIQQLKQKIYVDGVQKDH
 HGTLEGKVASSSLPVSAEKSHLVPLMDARINAYIEEEVQRRQLDLHRVISEGCSTSA
 DTMKDNEKLHNGTIQRKLYERMVSRSLGANPDDLKDKPIKISIPRYVLCGQGKDAHF
 EFEVKITVLDDETWTVFRRYSRFREMHKTLKLYAELAAEFPPKKLFGNKDERVIAER
 RSHLEKYLRDFFSVMLQSATSPLHINKVGLTSLKHTICEFSPFFKKGVFDYSSHGTT
 RTRPLEQKLISEEDLAANDILDYKDDDDKV

Purity	> 80% as determined by SDS-PAGE and Coomassie blue staining
Stability	Stable for 3 months from receipt of products under proper storage and handling conditions.
Storage	Store at -80 centigrade. Avoid repeated freeze-thaw cycles.
Concentration	50 µg/mL as determined by BCA
Storage Buffer	100 mM glycine, 25 mM Tris-HCl, pH 7.3.

GENE INFORMATION

Gene Name	KIF16B kinesin family member 16B [Homo sapiens (human)]
Official Symbol	KIF16B

Synonyms KIF16B; kinesin family member 16B; C20orf23, chromosome 20 open reading frame 23; kinesin-like protein KIF16B; dJ971B4.1; FLJ20135; SNX23; sorting nexin 23; kinesin motor protein; C20orf23; KISC20ORF;

Gene ID [55614](#)

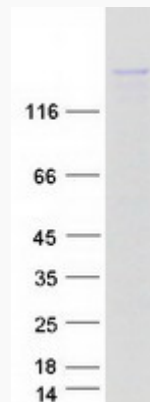
mRNA Refseq [NM_024704](#)

Protein Refseq [NP_078980](#)

MIM [618171](#)

UniProt ID [Q96L93](#)

SDS-PAGE



 Tel: 1-631-559-9269 1-516-512-3133

 Email: info@creative-biomart.com  Fax: 1-631-938-8127

 45-1 Ramsey Road, Shirley, NY 11967, USA