

Recombinant Human KIF18B overexpression lysate, Myc/DDK-tagged

Cat. No. KIF18B-01HCL **Lot. No.** (See product label)

SPECIFICATION

Product Overview

KIF18B HEK293T cell transient overexpression lysate (as WB positive control) with a C-Myc/DDK tag was expressed in HEK293T.

Preparation: HEK293T cells in 10-cm dishes were transiently transfected with 5 µg cDNA plasmid. Transfected cells were cultured for 48hrs before collection. The cells were lysed in modified RIPA buffer (25mM Tris-HCl pH7.6, 150mM NaCl, 1% NP-40, 1mM EDTA, 1xProteinase inhibitor cocktail mix, 1mM PMSF and 1mM Na₃VO₄), and then centrifuged to clarify the lysate. Protein concentration was measured by BCA kit. To facilitate transportation and protein, the products are supplied as lyophilized proteins.

Components: 1 vial of 20 µg lyophilized gene specific transient over-expression cell lysate.

Species Human

Source HEK293

Description In complex with KIF2C, constitutes the major microtubule plus-end depolymerizing activity in mitotic cells. Its major role may be to transport KIF2C and/or MAPRE1 along microtubules.

Molecular Mass 93.1 kDa

Stability Avoid repeated freeze-thaw cycles after reconstitution. Lysate samples are stable for

 Tel: 1-631-559-9269 1-516-512-3133

 Email: info@creative-biomart.com  Fax: 1-631-938-8127

 45-1 Ramsey Road, Shirley, NY 11967, USA

12 months from date of receipt when stored at -20 centigrade.

Storage Upon receiving, store the sample at -20 centigrade.

Reconstitution Lysate samples can be reconstituted with SDS Sample Buffer.

GENE INFORMATION

Gene Name KIF18B kinesin family member 18B [Homo sapiens (human)]

Official Symbol KIF18B

Synonyms KIF18B; kinesin family member 18B; kinesin-like protein KIF18B

Gene ID 146909

mRNA Refseq NM_001080443

Protein Refseq NP_001073912

MIM 614570

UniProt ID Q86Y91

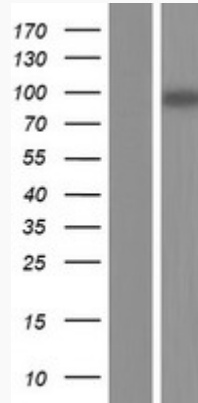
 Tel: 1-631-559-9269 1-516-512-3133

 Email: info@creative-biomart.com  Fax: 1-631-938-8127

 45-1 Ramsey Road, Shirley, NY 11967, USA



SDS-PAGE



Tel: 1-631-559-9269 1-516-512-3133

Email: info@creative-biomart.com Fax: 1-631-938-8127

45-1 Ramsey Road, Shirley, NY 11967, USA