

Recombinant Rat KIF1C Protein (1-272 aa), His-tagged

Cat. No. KIF1C-1433R Lot. No. (See product label)

SPECIFICATION

Product Overview	Recombinant Rat KIF1C Protein (1-272 aa) is produced by Yeast expression system. This protein is fused with a 6xHis tag at the N-terminal. Protein Description: Partial.
Species	Rat
Source	Yeast
ProteinLength	1-272 aa
Description	Probable motor protein.
Form	Tris-based buffer,50% glycerol
Molecular Mass	32.1 kDa
AA Sequence	MAGASVKVAVRVRPFNARETSQDAKCVVSMQGNTTTSIINPKQSRMFLKASFDYSYW SHTSVEDPQFASQQQVYRDIGEEMLLHAFEGYNVCIFAYGQTGAGKSYTMMGRQE PGQQGIVPQLCEDLFSRVNVNQSAQLSYSVEVSYMEIYCERVRDLLNPKSRGSLRV REHPILGPYVQDLSKLAVTSYADIADLMDCGNKARTVAATNMNETSSRSHAVFTIVFT QRSHDQLTGLDSEKVSISKISLVNLAGSERADSSGARGMRLKEGANINK
Purity	> 90% as determined by SDS-PAGE.
Notes	Repeated freezing and thawing is not recommended. Store working aliquots at 4 centigrade for up to one week.

 Tel: 1-631-559-9269 1-516-512-3133

 Email: info@creative-biomart.com  Fax: 1-631-938-8127

 45-1 Ramsey Road, Shirley, NY 11967, USA

Storage The shelf life is related to many factors, storage state, buffer ingredients, storage temperature and the stability of the protein itself. Generally, the shelf life of liquid form is 6 months at -20 centigrade/-80 centigrade. The shelf life of lyophilized form is 12 months at -20 centigrade/-80 centigrade.

Concentration A hardcopy of COA with reconstitution instruction is sent along with the products.

GENE INFORMATION

Gene Name Kif1c kinesin family member 1C [Rattus norvegicus]

Official Symbol KIF1C

Synonyms KIF1C; kinesin family member 1C; kinesin 1C;

Gene ID 113886

mRNA Refseq NM_145877

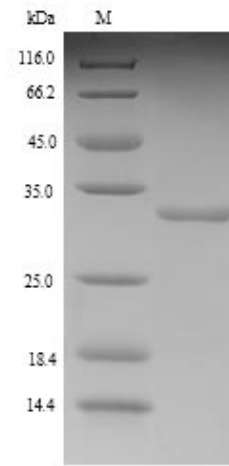
Protein Refseq NP_665884

UniProt ID O35787

 Tel: 1-631-559-9269 1-516-512-3133

 Email: info@creative-biomart.com  Fax: 1-631-938-8127

 45-1 Ramsey Road, Shirley, NY 11967, USA



(Tris-Glycine gel) Discontinuous SDS-PAGE (reduced) with 5% enrichment gel and 15% separation gel.

 Tel: 1-631-559-9269 1-516-512-3133

 Email: info@creative-biomart.com  Fax: 1-631-938-8127

 45-1 Ramsey Road, Shirley, NY 11967, USA