

# Recombinant Full Length Human KIF20A Protein, C-Flag-tagged

**Cat. No.** KIF20A-1366HFL    **Lot. No.** (See product label)

## SPECIFICATION

<b>Product Overview</b>	Recombinant Full Length Human KIF20A Protein, fused to Flag-tag at C-terminus, was expressed in Mammalian cells.
<b>Species</b>	Human
<b>Source</b>	Mammalian Cells
<b>Description</b>	Enables protein kinase binding activity. Involved in microtubule bundle formation; midbody abscission; and regulation of cytokinesis. Located in several cellular components, including cleavage furrow; intercellular bridge; and midbody. Implicated in restrictive cardiomyopathy.
<b>Form</b>	25 mM Tris HCl, pH 7.3, 100 mM glycine, 10% glycerol.
<b>Molecular Mass</b>	100.1 kDa
<b>AA Sequence</b>	MSQGILSPPAGLLSDDDVVVSPMFESTAADLGSVVRKNLLSDCSVVSTSLEDKQQV PSEDSMEKVKVYLR VRPLLSELERQEDQGCVRIENVETLVLQAPKDSFALKSNER GIGQATHRFTFSQIFGPEVGGQASFFNLT VKEMVKDVLKGNWLIYTYGVTNSGKTH TIQGTIKDGGILPRSLALIFNSLQGQLHPTPDLKPLLSNEVI WLDSKQIRQEEMKKLSL LNGGLQEEELSTSLKRSVYIESRIGTSTSFDSGIAGLSSISQCTSSSQLDETS HRWA QPDTAPLPVPANIRFSIWISFFEIYNELLYDLLEPPSQQRKRQTLRLCEDQNGNPYVK DLNWIHVQ DAEEAWKLLKVGRKNQSFATHLNQNSSRSHSIFSIRILHLQGEEDIVP KISELSLCDLAGSERCKDQKS GERLKEAGNINTSLHTLGRCIAALRQNQQNRSKQNL

 Tel: 1-631-559-9269    1-516-512-3133

 Email: [info@creative-biomart.com](mailto:info@creative-biomart.com)     Fax: 1-631-938-8127

 45-1 Ramsey Road, Shirley, NY 11967, USA

VPFRDSKLTRVFQGGFFTGRGRSCMIVNVNPCAST YDETLHVAKFSAIASQLVHAPP  
 MQLGFPSLHSHFIKEHSLQVSPSLEKGAADTGLDDDIENEADISMYGK EELLQVVEA  
 MKTLLKQERQEKLQLEMHLRDEICNEMVEQMQRREQWCSEHLDTQKELLEEMYEE  
 KLNILK ESLTSFYQEEIQERDEKIEELEALLQEARQQSVAHQSGSELALRRSQRLA  
 ASASTQQLQEVKAKLQCK AELNSTTEELHXYQKMLEPPPSAKPFTIDVDKKLEEG  
 QKNIRLLRTELQKLGESLQSAERACCHSTGAGK LRQALTTCDDILIKDQDTLAEQNLN  
 NMVLVKLDRKKAACIAEQYHTVLKLGQVSAKKRLGTNQNENQQPN  
 QQPPGKKPFLRNLLPRTPTCQSSTDCSPYARILRSRRSPLLKSGPFGKKYTRTRPLE  
 QKLISEEDLAANDILDYKDDDDKV

<b>Purity</b>	> 80% as determined by SDS-PAGE and Coomassie blue staining.
<b>Stability</b>	Stable for 12 months from the date of receipt of the product under proper storage and handling conditions. Avoid repeated freeze-thaw cycles.
<b>Storage</b>	Store at -80 centigrade.
<b>Concentration</b>	>50 ug/mL as determined by microplate BCA method.
<b>Preparation</b>	Recombinant protein was captured through anti-DDK affinity column followed by conventional chromatography steps.
<b>Protein Families</b>	Druggable Genome
<b>Full Length</b>	Full L.

## GENE INFORMATION

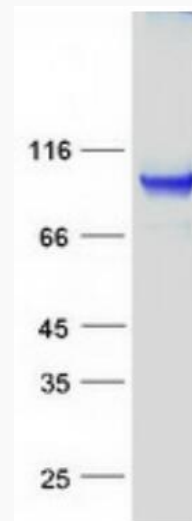
<b>Gene Name</b>	KIF20A kinesin family member 20A [ Homo sapiens (human) ]
<b>Official Symbol</b>	KIF20A

 Tel: 1-631-559-9269 1-516-512-3133

 Email: [info@creative-biomart.com](mailto:info@creative-biomart.com)  Fax: 1-631-938-8127

 45-1 Ramsey Road, Shirley, NY 11967, USA

<b>Synonyms</b>	RCM6; MKLP2; RAB6KIFL
<b>Gene ID</b>	10112
<b>mRNA Refseq</b>	NM_005733.3
<b>Protein Refseq</b>	NP_005724.1
<b>MIM</b>	605664
<b>UniProt ID</b>	O95235



Coomassie blue staining of purified KIF20A protein.

 Tel: 1-631-559-9269 1-516-512-3133

 Email: [info@creative-biomart.com](mailto:info@creative-biomart.com)  Fax: 1-631-938-8127

 45-1 Ramsey Road, Shirley, NY 11967, USA