

Active Recombinant Human KIF20A Protein,His-tagged

Cat. No. KIF20A-13H Lot. No. (See product label)

SPECIFICATION

Product Overview	Active Recombinant Human KIF20A Protein,His-tagged was expressed in a prokaryotic system.
Species	Human
Source	prokaryotic system
Tag	N-His
Form	lyophilized powder
Molecular Mass	54 kDa
Purity	>70% by scanning densitometry of a coomassie-stained SDS-PAGE gradient gel.
Applications	<p>Measurement of Microtubule-activated ATPase assays.</p> <p>Identification/characterization of proteins or small molecules that affect motor ATPase activity.</p> <p>Identification/characterization of proteins or small molecules that affect motor/microtubule interactions.</p>
Notes	Kinesins do not respond well to repeated freeze /thaws and for storage at -70°C the protein concentration should not be less than 5 mg / ml. Kinesin diluted below 5 mg/ml should not be re-frozen as it will lose activity.

 Tel: 1-631-559-9269 1-516-512-3133

 Email: info@creative-biomart.com  Fax: 1-631-938-8127

 45-1 Ramsey Road, Shirley, NY 11967, USA

Storage	The lyophilized protein is stable for at least 1 year when stored at 4°C with a desiccant (humidity <10%). Alternatively, the lyophilized protein can be stored at -70°C and is stable at least 1 year.
Reconstitution	The protein should be reconstituted to 5 mg/ml with ice cold Milli-Q water. See above table for resuspension volumes. The protein can be aliquoted into experiment sized tubes and snap frozen in liquid nitrogen. When reconstituted and stored at -70°C, the protein will be stable for at least 4 months.
References	<ol style="list-style-type: none"> 1. Hackney, D and Jiang, W. (2001) Methods in Molecular Biology (Humana Press) 164:65-71. 2. Kuriyama et al. 1994. J. Cell Science 107:3485-3499. 3. Nislow et al. 1992. Nature 359:543-547.

GENE INFORMATION

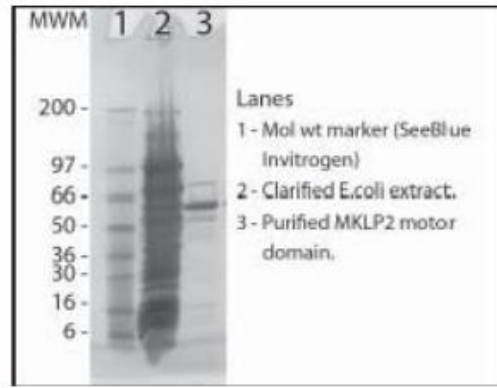
Gene Name	KIF20A kinesin family member 20A [Homo sapiens (human)]
Official Symbol	KIF20A
Synonyms	RCM6,MKLP2,RAB6KIFL,KIF20A
Gene ID	10112
mRNA Refseq	NM_005733
Protein Refseq	NP_005724
MIM	605664
UniProt ID	O95235

 Tel: 1-631-559-9269 1-516-512-3133

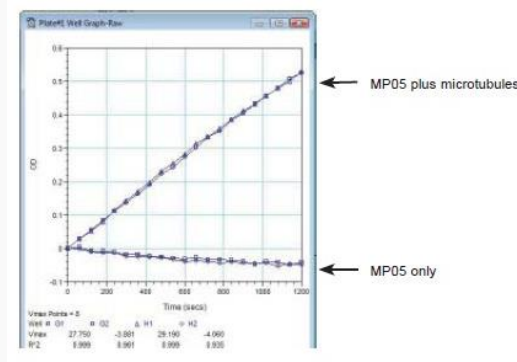
 Email: info@creative-biomart.com  Fax: 1-631-938-8127

 45-1 Ramsey Road, Shirley, NY 11967, USA

MKLP2 Motor Domain protein gel.
A 5 µg sample of recombinant MKLP2 Motor Domain protein was separated on a 4-20% SDS-PAGE gradient gel, along with See Blue molecular weight markers (Invitrogen). The fusion protein runs at 54 kD on the polyacrylamide gradient gel. Protein quantitation was determined using Advanced Protein assay.



4-20% SDS-PAGE gradient gel



Tel: 1-631-559-9269 1-516-512-3133

Email: info@creative-biomart.com Fax: 1-631-938-8127

45-1 Ramsey Road, Shirley, NY 11967, USA



Kinesin ELIPA Assay Kit

 Tel: 1-631-559-9269 1-516-512-3133

 Email: info@creative-biomart.com  Fax: 1-631-938-8127

 45-1 Ramsey Road, Shirley, NY 11967, USA