

## Recombinant Human KIF20B Protein, GST-tagged

**Cat. No.** KIF20B-5496H    **Lot. No.** (See product label)

### SPECIFICATION

<b>Product Overview</b>	Human MPHOSPH1 partial ORF ( NP_057279, 1671 a.a. - 1780 a.a.) recombinant protein with GST-tag at N-terminal.
<b>Species</b>	Human
<b>Source</b>	Wheat Germ
<b>Description</b>	KIF20B (Kinesin Family Member 20B) is a Protein Coding gene. Among its related pathways are Response to elevated platelet cytosolic Ca <sup>2+</sup> and Golgi-to-ER retrograde transport. GO annotations related to this gene include ATPase activity and microtubule motor activity. An important paralog of this gene is KIF20A.
<b>Molecular Mass</b>	37.84 kDa
<b>AA Sequence</b>	RSQASIIGVNLATKKKEGTLQKFGDFLQHSPSILQSKAKKIIETMSSSKLSNVEASKEN VSQPKRAKRKLYTSEISSPIDISGQVILMDQKMKESDHQIIKRRLRTKTAK
<b>Applications</b>	Enzyme-linked Immunoabsorbent Assay Western Blot (Recombinant protein) Antibody Production Protein Array
<b>Notes</b>	Best use within three months from the date of receipt of this protein.
<b>Storage</b>	Store at -80 centigrade. Aliquot to avoid repeated freezing and thawing.

 Tel: 1-631-559-9269    1-516-512-3133

 Email: [info@creative-biomart.com](mailto:info@creative-biomart.com)     Fax: 1-631-938-8127

 45-1 Ramsey Road, Shirley, NY 11967, USA

**Storage Buffer** 50 mM Tris-HCl, 10 mM reduced Glutathione, pH=8.0 in the elution buffer.

## GENE INFORMATION

**Gene Name** KIF20B kinesin family member 20B [ Homo sapiens (human) ]

**Official Symbol** KIF20B

**Synonyms** KIF20B; kinesin family member 20B; CT90; MPP1; KRMP1; MPP-1; MPHOSPH1; kinesin-like protein KIF20B; M-phase phosphoprotein 1; cancer/testis antigen 90; kinesin-related motor interacting with PIN1; mitotic kinesin-like protein; mitotic kinesin-related protein

**Gene ID** 9585

**mRNA Refseq** NM\_001284259

**Protein Refseq** NP\_001271188

**MIM** 605498

**UniProt ID** Q96Q89

 Tel: 1-631-559-9269 1-516-512-3133

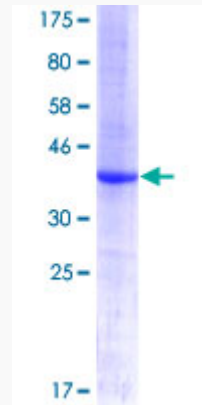
 Email: [info@creative-biomart.com](mailto:info@creative-biomart.com)  Fax: 1-631-938-8127

 45-1 Ramsey Road, Shirley, NY 11967, USA



**Quality Control**

**Testing:**



12.5% SDS-PAGE Stained with Coomassie Blue.

Tel: 1-631-559-9269 1-516-512-3133

Email: [info@creative-biomart.com](mailto:info@creative-biomart.com) Fax: 1-631-938-8127

45-1 Ramsey Road, Shirley, NY 11967, USA