

Recombinant Human KIF2B protein, His-tagged

Cat. No. KIF2B-371H **Lot. No.** (See product label)

SPECIFICATION

Product Overview	Recombinant Human KIF2B protein(NP_115948.4)(1 - 350 aa), fused to His-tag, was expressed in E.coli.
Species	Human
Source	E.coli
ProteinLength	1 - 350 aa
Form	The purified protein was Lyophilized from sterile PBS (58mM Na ₂ HPO ₄ , 17mM NaH ₂ PO ₄ , 68mM NaCl, pH7.). 5 % trehalose and 5 % mannitol are added as protectants before lyophilization.
AA Sequence	MASQFCLPESPCLSPKPLKPHFGDIQEGIYVAIQRSDKRIHLAVVTEINRENYWVTV EWVEKAVKKGKKIDLETILLNPAIDSAEHPMPPLSPLALAPSSAIRDQRTATKWW AMIPQKNQTASGDSLDRVPSKPCMLKQKSPCLWEIQKLQEQRKRRRLQQEIRA RRALDVNTRNPNYEIMHMIEEYRRHLDSKISVLEPPQEHRICVCVRKRPLNQRETT LKDLDIITVPSDNVVMVHESKQKVDLTRYLQNQTFCFDHAFDDKASNELVYQFTAQP LVESIFRKGMATCFAYGQTGSGKTYTMGGDFSGTAQDCSKGIYALVAQDVFLLLRN STYEKLDL
Purity	85%, by SDS-PAGE with Coomassie Brilliant Blue staining.
Stability	Store for up to 12 months at -20°C to -80°C as lyophilized powder.

 Tel: 1-631-559-9269 1-516-512-3133

 Email: info@creative-biomart.com  Fax: 1-631-938-8127

 45-1 Ramsey Road, Shirley, NY 11967, USA

Storage	<p>Short-term storage: Store at 2-8°C for (1-2 weeks).</p> <p>Long-term storage: Aliquot and store at -20°C to -80°C for up to 3 months, buffer containing 50% glycerol is recommended for reconstitution. Avoid repeat freeze-thaw cycles.</p>
Reconstitution	<p>Reconstitute at 0.25 g/μl in 200 μl sterile water for short-term storage.</p> <p>Reconstitution with 200 μl 50% glycerol solution is recommended for longer term storage (see Stability and Storage for more details).</p> <p>If a different concentration is needed for your purposes please adjust the reconstitution volume as required (please note: the ion concentration of the final solution will vary according to the volume used).</p> <p>Note: Centrifuge vial before opening. When reconstituting, gently pipet and wash down the sides of the vial to ensure full recovery of the protein into solution.</p>
Shipping	<p>The product is shipped at ambient temperature. Upon receipt, store it immediately at the recommended temperature (see below).</p>

GENE INFORMATION

Gene Name	KIF2B kinesin family member 2B [Homo sapiens (human)]
Official Symbol	KIF2B
Gene ID	84643
mRNA Refseq	NM_032559.5
Protein Refseq	NP_115948.4
UniProt ID	Q8N4N8

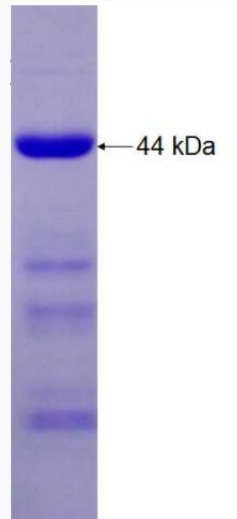
 Tel: 1-631-559-9269 1-516-512-3133

 Email: info@creative-biomart.com  Fax: 1-631-938-8127

 45-1 Ramsey Road, Shirley, NY 11967, USA



SDS-PAGE



Tel: 1-631-559-9269 1-516-512-3133

Email: info@creative-biomart.com Fax: 1-631-938-8127

45-1 Ramsey Road, Shirley, NY 11967, USA