

Recombinant Human KIF2C Protein, Myc/DDK-tagged, C13 and N15-labeled

Cat. No. KIF2C-1164H **Lot. No.** (See product label)

SPECIFICATION

Product Overview	KIF2C MS Standard C13 and N15-labeled recombinant protein (NP_006836) with a C-terminal MYC/DDK tag, was expressed in HEK293 cells.
Species	Human
Source	HEK293
Description	This gene encodes a kinesin-like protein that functions as a microtubule-dependent molecular motor. The encoded protein can depolymerize microtubules at the plus end, thereby promoting mitotic chromosome segregation. Alternative splicing results in multiple transcript variants.
Molecular Mass	81.3 kDa
AA Sequence	MAMDSSLQARLFPGLAIKIQRSNGLIHSANVRTVNLEKSCVSVEWAEGGATKGKEID FDDVAAINPELLQLLPLHPKDNLPLQENVTIQKQKRRSVNSKIPAPKESLRSRSTRMS TVSELRITAQENDMEVELPAAANSRKQFSVPPAPTRPSCPAVAEIPLRMVSEEMEEQ VHSIRGSSSANPVNSVRRKSCLVKEVEKMKNKREEKKAQNSEMRMKRAQEYDSSF PNWEFARMIKEFRATLECHPLTMTDPIEEHRICVCRKRPLNKQELAKKEIDVISIPSK CLLLVHEPKLKVLDLTKYLENQAFCFDFAFDETASNEVVYRFTARPLVQTIFEGGKATC FAYGQTGSGKTHTMGGDLGKAQNASKGIYAMASRDVFLNKNQPCYRKLGLEVYV TFFEIYNGKLFDLLNKKAKLRVLEDGKQQVQVGLQEHLVNSADDVIKIDMIDMGSACR TSGQTFANSNSSRSHACFQIILRAKGRMHGKFSVLVLAGNERGADTSSADRQTRME

 Tel: 1-631-559-9269 1-516-512-3133

 Email: info@creative-biomart.com  Fax: 1-631-938-8127

 45-1 Ramsey Road, Shirley, NY 11967, USA

GAEINKSLLALKECIRALGQNKHAHTPFRESKLTQVLRDSFIGENSRTCMIATISPGISS
 CEYTLNTRLRYADRVKELSPHSGPSGEQLIQMETEEMEACSNALIPGNLSKEEEEELS
 SQMSSFNEAMTQIRELEEKAMEELKEIIQQGPDWLELSEMTEQPDYDLETFVNKAES
 ALAQQAKHFSALPDVIKALRLAMQLEEQASRQISSKKRPQ

Purity > 80% as determined by SDS-PAGE and Coomassie blue staining

Stability Stable for 3 months from receipt of products under proper storage and handling conditions.

Storage Store at -80 centigrade. Avoid repeated freeze-thaw cycles.

Concentration 50 µg/mL as determined by BCA

Storage Buffer 100 mM glycine, 25 mM Tris-HCl, pH 7.3.

GENE INFORMATION

Gene Name [KIF2C kinesin family member 2C \[Homo sapiens \(human\) \]](#)

Official Symbol [KIF2C](#)

Synonyms KIF2C; kinesin family member 2C; kinesin like 6 (mitotic centromere associated kinesin), KN6; kinesin-like protein KIF2C; MCAK; kinesin-like 6; kinesin-like protein 6; mitotic centromere-associated kinesin; KN6;

Gene ID [11004](#)

mRNA Refseq [NM_006845](#)

Protein Refseq [NP_006836](#)

 Tel: 1-631-559-9269 1-516-512-3133

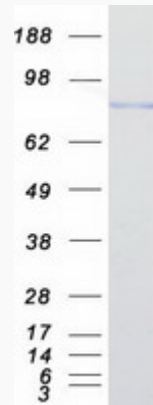
 Email: info@creative-biomart.com  Fax: 1-631-938-8127

 45-1 Ramsey Road, Shirley, NY 11967, USA

MIM 604538

UniProt ID Q99661

SDS-PAGE



 Tel: 1-631-559-9269 1-516-512-3133

 Email: info@creative-biomart.com  Fax: 1-631-938-8127

 45-1 Ramsey Road, Shirley, NY 11967, USA