

Recombinant Human KIF3A Protein, Myc/DDK-tagged, C13 and N15-labeled

Cat. No. KIF3A-4485H **Lot. No.** (See product label)

SPECIFICATION

Product Overview	KIF3A MS Standard C13 and N15-labeled recombinant protein (NP_008985) with a C-terminal MYC/DDK tag, was expressed in HEK293 cells.
Species	Human
Source	HEK293
Description	KIF3A (Kinesin Family Member 3A) is a Protein Coding gene. Diseases associated with KIF3A include Polycystic Kidney Disease 2 With Or Without Polycystic Liver Disease and Usher Syndrome, Type I. Among its related pathways are Organelle biogenesis and maintenance and Signaling by GPCR. Gene Ontology (GO) annotations related to this gene include ATPase activity and microtubule binding. An important paralog of this gene is KIF3B.
Molecular Mass	80 kDa
AA Sequence	MPINKSEKPESCDNVKVVVRCRPLNEREKSMCYKQAVSVDEMRTITVHKTSSNE PPKTFTFDVFPGPEKQLDVYNLTARPIIDSVLEGYNGTIFAYGQTGTGKFTTMEGVR AIPELRGIIPNSFAHIFGHIKAEGDTRFLVRVSYLEIYNEEVRDLLGKDQTRLEVKE RPDVG VYIKDLSAYVVNNADDMDRIMTLGHKNRSVGATNMNEHSSRSHAIFTITIEC SEKGIDGNMHV RMGKLHLV DLAGSERQAKTGATGQRLKEATKINLSLSTLGNVISAL VDGKSTHV PYRNSKLTRLLQDSLGGNSKTMMCANIGPADYNYDETISTLRYANRAK NIKNKARINEDPKDALLRQFQKEIEELKKKLEEGEEISGSDISGSEEDDDEEGEVGED

 Tel: 1-631-559-9269 1-516-512-3133

 Email: info@creative-biomart.com  Fax: 1-631-938-8127

 45-1 Ramsey Road, Shirley, NY 11967, USA

GEKRKKRRGKKKVSPDKMIEMQAKIDEERKALETKLDMEEEERNKARAELEKREKD
 LLKAQQEHQSLLLEKLSALEKKVIVGGVDLLAKAEEQEKLLEESNMELEERRKRAEQL
 RRELEEKEQERLDIEEKYTSLQEEAQQGKTKLKKVWTMLMAAKSEMADLQQEHQR
 EIEGLLENIRQLSRELRLQMLIIDNFIPRDYQEMIENYVHWNEDIGEWQLKCVAYTGN
 NMRKQTPVPDKKEKDPFEVDLSHVYLAYTEESLRQSLMKLERPRTSKGKARPKTGR
 RKRSAPETVIDSLLQTRTRPLEQKLISEEDLAANDILDYKDDDDKV

Purity	> 80% as determined by SDS-PAGE and Coomassie blue staining
Stability	Stable for 3 months from receipt of products under proper storage and handling conditions.
Storage	Store at -80 centigrade. Avoid repeated freeze-thaw cycles.
Concentration	50 µg/mL as determined by BCA
Storage Buffer	100 mM glycine, 25 mM Tris-HCl, pH 7.3.

GENE INFORMATION

Gene Name	KIF3A kinesin family member 3A [Homo sapiens (human)]
Official Symbol	KIF3A
Synonyms	KIF3A; kinesin family member 3A; kinesin-like protein KIF3A; kinesin family protein 3A; microtubule plus end-directed kinesin motor 3A;
Gene ID	11127
mRNA Refseq	NM_007054

 Tel: 1-631-559-9269 1-516-512-3133

 Email: info@creative-biomart.com  Fax: 1-631-938-8127

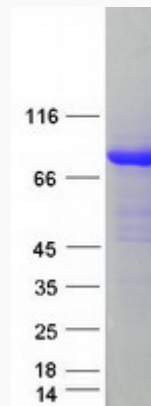
 45-1 Ramsey Road, Shirley, NY 11967, USA

Protein Refseq NP_008985

MIM 604683

UniProt ID Q9Y496

SDS-PAGE



 Tel: 1-631-559-9269 1-516-512-3133

 Email: info@creative-biomart.com  Fax: 1-631-938-8127

 45-1 Ramsey Road, Shirley, NY 11967, USA