

Recombinant Human KIF3B Protein, Myc/DDK-tagged, C13 and N15-labeled

Cat. No. KIF3B-3962H **Lot. No.** (See product label)

SPECIFICATION

Product Overview	KIF3B MS Standard C13 and N15-labeled recombinant protein (NP_004789) with a C-terminal MYC/DDK tag, was expressed in HEK293 cells.
Species	Human
Source	HEK293
Description	The protein encoded by this gene acts as a heterodimer with kinesin family member 3A to aid in chromosome movement during mitosis and meiosis. The encoded protein is a plus end-directed microtubule motor and can interact with the SMC3 subunit of the cohesin complex. In addition, the encoded protein may be involved in the intracellular movement of membranous organelles. This protein and kinesin family member 3A form the kinesin II subfamily of the kinesin superfamily.
Molecular Mass	84.9 kDa
AA Sequence	MSKLGKSSSEVRVVVRCRPMNGKEKAASYDKVVDVDVKLGQVSVKNPKGTAHEMPK TFTFDVAVYDWNAAKQFELYDETRPLVDSVLQGFNGTIFAYGQTGTGKTYTMEGIRG DPEKRGVIPNSFDHIFTHISRSQNQQYLVRASYLEIYQEEIRDLLSKDQTKRLELKERP DTGVYVKDLSSFVTKSVKEIEHVMNVGNQNRSVGATNMNEHSSRSHAIFVITIECSE VGLDGENHIRVGKLNLDLAGSERQAKTGAQGERLKEATKINLSLSALGNVISALVD GKSTHIPPYRDSKLRLLQDSLGGNAKTMVANVGPASYNVEETLTTLRYANRAKNIK NKPRVNEDPKDALLREFQEEIARLKAQLEKRSIGRRKRREKRREGGGSGGGGEEEE

 Tel: 1-631-559-9269 1-516-512-3133

 Email: info@creative-biomart.com  Fax: 1-631-938-8127

 45-1 Ramsey Road, Shirley, NY 11967, USA



EEGEEGEEEGDDKDDYWREQQEKLEIEKRAIVEDHSLVAEEKMROLLKEKEKKMEDL
 RREKDAAEMLGAKIKAMESKLLVGGKNIVDHTNEQQKILEQKRQEIAEQKRREREIQ
 QQMESRDEETLELKETYSSLQQEVDIKTKKLLKLFSLQAVKAEIHDLQEEHIKERQE
 LEQTQNELTRELKHLIENFIPLLEEKSKIMNRAFFDEEEDHWKLHPITRLENQQMM
 KRPVSAVGYKRPLSQHARMSMMIRPEARYRAENIVLLELDMPSTRTRDYEGPAIAPK
 VQAALDAALQDEDEIQVDASSFESTANKKSKARPKSGRKS GSSSSSSSGTPASQLYP
 QSRGLVPKTRTRPLEQKLISEEDLAANDILDYKDDDDKV

Purity	> 80% as determined by SDS-PAGE and Coomassie blue staining
Stability	Stable for 3 months from receipt of products under proper storage and handling conditions.
Storage	Store at -80 centigrade. Avoid repeated freeze-thaw cycles.
Concentration	50 µg/mL as determined by BCA
Storage Buffer	100 mM glycine, 25 mM Tris-HCl, pH 7.3.

GENE INFORMATION

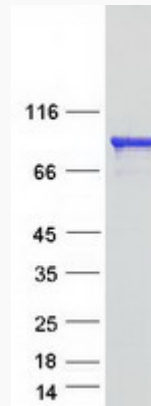
Gene Name	KIF3B kinesin family member 3B [Homo sapiens (human)]
Official Symbol	KIF3B
Synonyms	KIF3B; kinesin family member 3B; kinesin-like protein KIF3B; KIAA0359; microtubule plus end-directed kinesin motor 3B; HH0048;
Gene ID	9371
mRNA Refseq	NM_004798

Protein Refseq NP_004789

MIM 603754

UniProt ID O15066

SDS-PAGE



 Tel: 1-631-559-9269 1-516-512-3133

 Email: info@creative-biomart.com  Fax: 1-631-938-8127

 45-1 Ramsey Road, Shirley, NY 11967, USA