

Recombinant Human KIF4B Protein, Myc/DDK-tagged, C13 and N15-labeled

Cat. No. KIF4B-4363H **Lot. No.** (See product label)

SPECIFICATION

Product Overview

KIF4B MS Standard C13 and N15-labeled recombinant protein (NP_001092763) with a C-terminal MYC/DDK tag, was expressed in HEK293 cells.

Species

Human

Source

HEK293

Description

This gene is an intronless retrocopy of kinesin family member 4A. The protein encoded by this gene is a microtubule-based motor protein that plays vital roles in anaphase spindle dynamics and cytokinesis.

Molecular Mass

139.9 kDa

AA Sequence

MKEEVKGI PVRVALRCRPLVPKEISEGCMCLSFVPGETQVVVGTDKSFTYDFVFDP
 CTEQEEVFNKAVAPLIKGIFKGYNATVLAYGQTGSGKTYSMGGAYTAEQENEPTVGI
 IPRVIQLLFKEIDKKSDFEFTLKVSYLEIYNEEILDLLCPSREKAQINIREDPKEGIKIVGL
 TEKTVLVALDTVSCLEQGNNRSTVASTAMNSQSSRSHAFITISIEQRKKSDKNCSFR
 SKLHLVLDLAGSERQKKTKAEGDRLKEGININRGLLCLGNVISALGDDKKGFSVPYRD
 SKLTRLLQDSLGGNSHTLMIACVSPADSNLEETLSTLRYADRARKIKNKPIVNIDPHTA
 ELNHLKQQVQQLQVLLLQAHGGTLPGSINAEPSENLQSLMEKNQSLVEENEKLSRC
 LSKAAGQTAQMLERIILTEQVNEKLNKLEELRQHVACKLDLQKL VETLEDQELKENV
 EIICNLQQLITQLSDET VACTAAAIDTAVEEEAQVETSPETSRS SDAFTTQHALHQAQ
 MSKEVV E LNNALALKEALVRKMTQNDNQLQPIQFQYQDN IKNLELEVINLQKEKEEL

 Tel: 1-631-559-9269 1-516-512-3133

 Email: info@creative-biomart.com  Fax: 1-631-938-8127

 45-1 Ramsey Road, Shirley, NY 11967, USA

VRELQTAKKNVNQAKLSEHRHKLLQELEGQIADLKKKLNEQSKLLKLKESTERTVSK
LNQEIWMMKNQRVQLMRQMKEDA EKFRQWKQKKDKEVIQLKERDRKRQYELLKLE
RNFQKQSSVLRKTEEAAAANKRLKDALQKQREVTDKRKETQSHGKEGIAARVRN
WLGNEIEVMVSTEEAKRHLNDLLEDKILAQDVVQLKEKESRENPPPKLRKCTFSL
SEVHGQVLESEDCITKQIESLET EMELRSAQIADLQQKLLDAESED RPKQCWENIATI
LEAKCAL KYLIGELVSSKIHVTKLENSLRQSKASCADMQKMLFEEQNHFSEIETELQA
ELVRMEQQHQEKVLYLVSQLQESQMAEKQLEKSASEKEQQLVSTLQCQDEELEKM
REVCEQNQQLQENI IKQLILLQVASRQKHL PNDTLLSPDSSF EYIPPKPKPSRVK
EKFLEQSM DIEDLKYCSEHSVNEHEDGDGDGDSDEGDDEEWKPTKLVKVS RKNIQ
GCSCKGWCGNKQCGCRKQKSDCGVDCSDPTKCRNRQQGKDSLGTVEQTQDSE
GSFKLEDPT EVTPGLSFFNPVCATPNSKILKEMCDMEQVLSKKTAPAPSPFDLPESK
HGATEYQQNKPPGKKKKRALASNTSFFSGCSPIEEEAHTRTRPLEQKLISEEDLAAN
DILDYKDDDDKV

Purity > 80% as determined by SDS-PAGE and Coomassie blue staining

Stability Stable for 3 months from receipt of products under proper storage and handling conditions.

Storage Store at -80 centigrade. Avoid repeated freeze-thaw cycles.

Concentration 50 µg/mL as determined by BCA

Storage Buffer 100 mM glycine, 25 mM Tris-HCl, pH 7.3.

GENE INFORMATION

Gene Name KIF4B kinesin family member 4B [Homo sapiens (human)]

Official Symbol KIF4B

 Tel: 1-631-559-9269 1-516-512-3133

 Email: info@creative-biomart.com  Fax: 1-631-938-8127

 45-1 Ramsey Road, Shirley, NY 11967, USA

Synonyms KIF4B; kinesin family member 4B; chromosome-associated kinesin KIF4B; chromokinesin-B

Gene ID [285643](#)

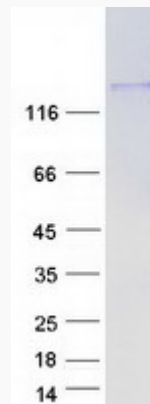
mRNA Refseq [NM_001099293](#)

Protein Refseq [NP_001092763](#)

MIM [609184](#)

UniProt ID [Q2VIQ3](#)

SDS-PAGE



 Tel: 1-631-559-9269 1-516-512-3133

 Email: info@creative-biomart.com  Fax: 1-631-938-8127

 45-1 Ramsey Road, Shirley, NY 11967, USA