

Recombinant Human KIF5A Protein, His-tagged

Cat. No. KIF5A-2361H Lot. No. (See product label)

SPECIFICATION

| | |
|-------------------------|--|
| Product Overview | Recombinant Human KIF5A Protein (Val174-Lys315) with a N-His tag was expressed in E. coli. |
| Species | Human |
| Source | E.coli |
| ProteinLength | Val174-Lys315 |
| Description | This gene encodes a member of the kinesin family of proteins. Members of this family are part of a multisubunit complex that functions as a microtubule motor in intracellular organelle transport. Mutations in this gene cause autosomal dominant spastic paraplegia 10. |
| Form | Freeze-dried powder |
| Molecular Mass | Predicted Molecular Mass: 19.2 kDa Accurate Molecular Mass: 19 kDa |
| Endotoxin | <1.0 EU per 1g (determined by the LAL method). |
| Purity | > 95% |
| Applications | Positive Control; Immunogen; SDS-PAGE; WB. |

 Tel: 1-631-559-9269 1-516-512-3133

 Email: info@creative-biomart.com  Fax: 1-631-938-8127

 45-1 Ramsey Road, Shirley, NY 11967, USA

| | |
|-----------------------|--|
| Stability | The thermal stability is described by the loss rate. The loss rate was determined by accelerated thermal degradation test, that is, incubate the protein at 37 centigrade for 48h, and no obvious degradation and precipitation were observed. The loss rate is less than 5% within the expiration date under appropriate storage condition. |
| Storage | Avoid repeated freeze/thaw cycles. Store at 2-8 centigrade for one month. Aliquot and store at -80 centigrade for 12 months. |
| Storage Buffer | 20mM Tris, 150mM NaCl, pH8.0, containing 1mM EDTA, 1mM DTT, 0.01% SKL, 5% Trehalose and Proclin300. |
| Reconstitution | Reconstitute in 20mM Tris, 150mM NaCl (pH8.0) to a concentration of 0.1-1.0 mg/mL. Do not vortex. |

GENE INFORMATION

| | |
|------------------------|--|
| Gene Name | KIF5A kinesin family member 5A [Homo sapiens (human)] |
| Official Symbol | KIF5A |
| Synonyms | KIF5A; kinesin family member 5A; spastic paraplegia 10 (autosomal dominant), SPG10; kinesin heavy chain isoform 5A; D12S1889; MY050; NKHC; KIF5A variant protein; neuronal kinesin heavy chain; kinesin heavy chain neuron-specific 1; kinesin, heavy chain, neuron-specific; SPG10; |
| Gene ID | 3798 |
| mRNA Refseq | NM_004984 |
| Protein Refseq | NP_004975 |

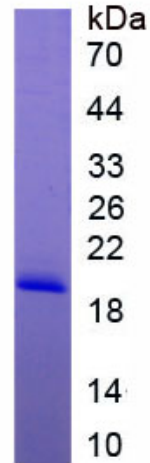
 Tel: 1-631-559-9269 1-516-512-3133

 Email: info@creative-biomart.com  Fax: 1-631-938-8127

 45-1 Ramsey Road, Shirley, NY 11967, USA

MIM 602821

UniProt ID Q12840



 Tel: 1-631-559-9269 1-516-512-3133

 Email: info@creative-biomart.com  Fax: 1-631-938-8127

 45-1 Ramsey Road, Shirley, NY 11967, USA