

Recombinant Human KIF5C Protein, Myc/DDK-tagged, C13 and N15-labeled

Cat. No. KIF5C-3946H **Lot. No.** (See product label)

SPECIFICATION

Product Overview	KIF5C MS Standard C13 and N15-labeled recombinant protein (NP_004513) with a C-terminal MYC/DDK tag, was expressed in HEK293 cells.
Species	Human
Source	HEK293
Description	The protein encoded by this gene is a kinesin heavy chain subunit involved in the transport of cargo within the central nervous system. The encoded protein, which acts as a tetramer by associating with another heavy chain and two light chains, interacts with protein kinase CK2. Mutations in this gene have been associated with complex cortical dysplasia with other brain malformations-2. Two transcript variants, one protein-coding and the other non-protein coding, have been found for this gene.
Molecular Mass	109.3 kDa
AA Sequence	MADPAECSIKVMCRFRPLNEAEILRGDKFIPKFKGDETVVIGQGKPYVFDRVLPNTT QEQVYNACAKQIVKDVLEGYNGTIFAYGQTSSGKTHMTEGKLDHPQLMGIIPRIAHDI FDHIYSMDENLEFHIKVSYFEIYLDKIRDLLDVSKTNLAVHEDKNRVPYVKGCTERFV SSPEEVMDDVIDEGKANRHVAVTNMNEHSSRSHSIFLINIKQENVETEKKLSGKLYLVD LAGSEKVSKTGAEGAVLDEAKNINKSLSALGNVISALAEGTKTHVPYRDSKMTRILQD SLGGNCRTTIVICCCSPSVFNEAETKSTLMFGQRAKTIKNTVSVNLELTAEEWKKKYEK EKEKNKTLKNVIQHLEMELNRWRNGEAVPEDEQISAKDQKNLEPCDNTPIIDNIAPVV

 Tel: 1-631-559-9269 1-516-512-3133

 Email: info@creative-biomart.com  Fax: 1-631-938-8127

 45-1 Ramsey Road, Shirley, NY 11967, USA

AGISTEEKEYDEEISSLYRQLDDKDDEINQQSQLAEKQMLDQDELLASTRRDY
 EKIQEELTRLQIENEAADDEVKEVLQALEELAVNYDQKSQEVEDKTRANEQLTDELA
 QKTTTLTTTQRELSQLQELSNHQKRATEILNLLLKDLGEIGGIIGTNDVKTLDVNGV
 IEEFTMARLYISKMKSEVKSLVNRSKQLESAQMDSNRKMNASERELAACQLLISQH
 EAKIKSLTDYMQNMEQKRRQLEESQDSLSEELAKLRAQEKMHVSVFQDKEKEHLTR
 LQDAEEMKKALEQQMESHREAHQKQLSRLRDEIEEKQKIIDEIRDNLNQLQLEQEKL
 SSDYNKLIKIEDQEREMKLEKLLLNDKREQAREDLKGLEETVSRELQTLHNLRKLFV
 QDLTTRVKKSVELDNDGGGSAQKQKISFLENNLEQLTKVHKQLVRDNADLRCEL
 PKLEKRLRATAERVKALESALKEAKENAMRDRKRYQQEVDRIKEAVRAKNMARRAH
 SAQIAKPIRPGHYPASSPTAVHAIRGGGGSSSNSTHYQKTRTRPLEQKLISEEDLAAN
 DILDYKDDDDKV

Purity > 80% as determined by SDS-PAGE and Coomassie blue staining

Stability Stable for 3 months from receipt of products under proper storage and handling conditions.

Storage Store at -80 centigrade. Avoid repeated freeze-thaw cycles.

Concentration 50 µg/mL as determined by BCA

Storage Buffer 100 mM glycine, 25 mM Tris-HCl, pH 7.3.

GENE INFORMATION

Gene Name KIF5C kinesin family member 5C [Homo sapiens (human)]

Official Symbol KIF5C


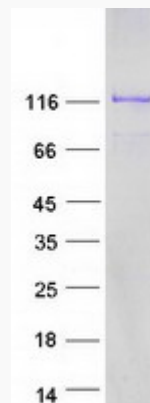
Synonyms KIF5C; kinesin family member 5C; kinesin heavy chain isoform 5C; kinesin heavy chain neuron-specific 2; kinesin, heavy chain, neuron-specific; KINN; NKHC; NKHC2;

 Tel: 1-631-559-9269 1-516-512-3133

 Email: info@creative-biomart.com  Fax: 1-631-938-8127

 45-1 Ramsey Road, Shirley, NY 11967, USA

NKHC-2; FLJ44735; KIAA0531; MGC111478;

Gene ID 3800**mRNA Refseq** NM_004522**Protein Refseq** NP_004513**MIM** 604593**UniProt ID** O60282**SDS-PAGE** Tel: 1-631-559-9269 1-516-512-3133 Email: info@creative-biomart.com  Fax: 1-631-938-8127 45-1 Ramsey Road, Shirley, NY 11967, USA