

Recombinant Human KIF6 Protein, Myc/DDK-tagged, C13 and N15-labeled

Cat. No. KIF6-2112H **Lot. No.** (See product label)

SPECIFICATION

Product Overview	KIF6 MS Standard C13 and N15-labeled recombinant protein (NP_659464) with a C-terminal MYC/DDK tag, was expressed in HEK293 cells.
Species	Human
Source	HEK293
Description	This gene encodes a member of a family of molecular motors which are involved in intracellular transport of protein complexes, membrane organelles, and messenger ribonucleic acid along microtubules. Kinesins function as homodimeric molecules with two N-terminal head domains that move along microtubules and two C-terminal tail domains that interact with the transported cargo, either directly or indirectly, through adapter molecules. This gene is ubiquitously expressed in coronary arteries and other vascular tissue. A naturally occurring mutation in this gene is associated with coronary heart disease.
Molecular Mass	92.4 kDa
AA Sequence	MVKQTIQIFARVKPPVRKHQQGIYSIDEDKLIPLSLEIILPRDLADGFVNNKRESYKFKF QRIFDQDANQETVFENIAKPVAGSVLAGYNGTIFAYGQTGSGKTFTITGGAERYSDR GIIPRTL SYIFEQLQKDSSKIYTTTHISYLEIYNECGYDLLDPRHEASSLEDLPKVTILEDP DQNIHLKNLTLHQATTEEEALNLLFLGDTNRMIAETPMNQASTRSHCIFTIHLSSKEP GSATVRHAKLHLVLDLAGSERVAKTGVGGHLLTEAKYINLSLHYLEQVIIALSEKHRSHI

 Tel: 1-631-559-9269 1-516-512-3133

 Email: info@creative-biomart.com  Fax: 1-631-938-8127

 45-1 Ramsey Road, Shirley, NY 11967, USA

PYRNSMMSVLRDSLGGNCMTTMIATLSLEKRNLDSEISTCRFAQRVALIKNEAVLN
 EEINPRLVIKRLQKEIQELKDELAMVTGEQRTEALTEAELLQLEKLITSFLEDQDSDSR
 LEVGADMRKVHHCFFHLLKLLNDKKILENNTVSSESKDQDCQEPLKEEEYRKLRLDIL
 KQRDNEINILVNMLKKEKKAQEALHLAGMDRREFRQSQSPFRLGNPEEGQRMRL
 SSAPSQAQDFSILGKRSSLLHKKIGMREEMSLGCQEAIFEIKRDHADSVTIDDNKQIL
 KQRFSEAKALGESINEARSKIGHLKEEITQRHIQQVALGISENMAVPLMPDQQEELR
 SQLEEEKRRYKTMFTRLKALKVEIEHLQLLMDKAKVKLQKEFEVWWAEEATNLQVN
 SPAVNSLDHTKPFLQTSDSQHEWSQLLSNKSSGGWEVQDQGTGRFDVCDVNARKI
 LPSPCSPHSQKQSSTSTPLEDSIPKRPVSSIPLTGDSQTDSDIIAFIKARQSILQKQC
 LGSNTRTRPLEQKLISEEDLAANDILDYKDDDDKV

Purity > 80% as determined by SDS-PAGE and Coomassie blue staining

Stability Stable for 3 months from receipt of products under proper storage and handling conditions.

Storage Store at -80 centigrade. Avoid repeated freeze-thaw cycles.

Concentration 50 µg/mL as determined by BCA

Storage Buffer 100 mM glycine, 25 mM Tris-HCl, pH 7.3.

GENE INFORMATION

Gene Name KIF6 kinesin family member 6 [Homo sapiens (human)]

Official Symbol KIF6

Synonyms KIF6; kinesin family member 6; C6orf102, chromosome 6 open reading frame 102; kinesin-like protein KIF6; dJ137F1.4; dJ188D3.1; dJ1043E3.1; DKFZp451I2418; MGC33317; C6orf102;

 Tel: 1-631-559-9269 1-516-512-3133

 Email: info@creative-biomart.com  Fax: 1-631-938-8127

 45-1 Ramsey Road, Shirley, NY 11967, USA

Gene ID 221458

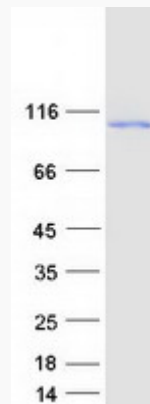
mRNA Refseq NM_145027

Protein Refseq NP_659464

MIM 613919

UniProt ID Q6ZMV9

SDS-PAGE



 Tel: 1-631-559-9269 1-516-512-3133

 Email: info@creative-biomart.com  Fax: 1-631-938-8127

 45-1 Ramsey Road, Shirley, NY 11967, USA