

# Recombinant Human KIF9 Protein, Myc/DDK-tagged, C13 and N15-labeled

**Cat. No.** KIF9-4744H    **Lot. No.** (See product label)

## SPECIFICATION

<b>Product Overview</b>	KIF9 MS Standard C13 and N15-labeled recombinant protein (NP_001128350) with a C-terminal MYC/DDK tag, was expressed in HEK293 cells.
<b>Species</b>	Human
<b>Source</b>	HEK293
<b>Description</b>	Belongs to the TRAFAC class myosin-kinesin ATPase superfamily. Kinesin family.
<b>Molecular Mass</b>	89.8 kDa
<b>AA Sequence</b>	<p>MGTRKKVHAFVRVKPTDDFAHEMIRYGDDKRSIDIHLKDIRRGVVNNQQTOWSFK  LDGVLHDASQDLVYETVAKDVVSQALDGYNGTIMCYGQTGAGKTYTMMGATENYK  HRGILPRALQQVFRMIEERPTHAITVRVSYLEIYNESLFDLLSTLPYVGPSVTPMTIVE  NPQGVFIKGLSVHLTSQEEDAFSLLFEGETNRIIASHTMNKNSRSHCIFTIYLEAHSR  TLSEEKYITSKINLVDLAGSERLGKSGSEGQVLKEATYINKSLSFLEQAIIALGDQKRD  HIPFRQCKLTHALKDSLGGNCNMVLVTNIYGEAAQLEETLSSLRFASRMKLVTTPEAI  NEKYDAERMVKNLEKELALLKQELAIHDSLNRFTVYDPMDEIQIAEINSQVRRYLE  GTLDEIDIISLRQIKEVFNQFRVLSQQEQEVESTLRRKYTLIDRNDFAAISAIQKAGLV  DVDGHLVGEPEGQNFGLGVAPFSTKPGKKAKSKKTFKEPLSSLARKEGASSPVNGK  DLDYVSTSKTQLVPSSKDGDVKDMLSRDRETSSIEPLPSDSPKEELRPIRPDTPPSK  PVAFEFKNEQGSEINRIFKENKSILNERRKRASETTQHINAIKREIDVTKEALNFQKS  LREKQGKYENKGLMIIDEEEFLLILKLDLKKQYRSEYQDLRDLRAEIQYCQHLVDQC</p>

 Tel: 1-631-559-9269    1-516-512-3133

 Email: [info@creative-biomart.com](mailto:info@creative-biomart.com)     Fax: 1-631-938-8127

 45-1 Ramsey Road, Shirley, NY 11967, USA

RHRLLEFEDIWYNESFVIPEDMQMALKPGGSIRPGMVPVNRIVSLGEDDQDKFSQL  
 QQRVLPEGPDSISFYNAKVKIEQKHNYLKTMMGLQQAHRKTRTRPLEQKLISEEDLA  
 ANDILDYKDDDDKV

**Purity** > 80% as determined by SDS-PAGE and Coomassie blue staining

**Stability** Stable for 3 months from receipt of products under proper storage and handling conditions.

**Storage** Store at -80 centigrade. Avoid repeated freeze-thaw cycles.

**Concentration** 50 µg/mL as determined by BCA

**Storage Buffer** 100 mM glycine, 25 mM Tris-HCl, pH 7.3.

## GENE INFORMATION

**Gene Name** KIF9 kinesin family member 9 [ Homo sapiens (human) ]

**Official Symbol** KIF9

**Synonyms** KIF9; kinesin family member 9; kinesin-like protein KIF9; MGC104186; kinesin protein 9;

**Gene ID** 64147

**mRNA Refseq** NM\_001134878

**Protein Refseq** NP\_001128350

**MIM** 607910

 Tel: 1-631-559-9269 1-516-512-3133

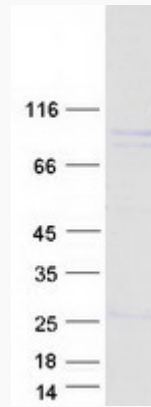
 Email: [info@creative-biomart.com](mailto:info@creative-biomart.com)  Fax: 1-631-938-8127

 45-1 Ramsey Road, Shirley, NY 11967, USA

UniProt ID

Q9HAQ2

SDS-PAGE



 Tel: 1-631-559-9269 1-516-512-3133

 Email: [info@creative-biomart.com](mailto:info@creative-biomart.com)  Fax: 1-631-938-8127

 45-1 Ramsey Road, Shirley, NY 11967, USA