

Recombinant Human KIFC1 protein, His&Myc-tagged

Cat. No. KIFC1-6454H Lot. No. (See product label)

SPECIFICATION

| | |
|-------------------------|--|
| Product Overview | Recombinant Human KIFC1 protein(Q9BW19)(1-673aa), fused with N-terminal His tag and C-terminal Myc tag, was expressed in E.coli. |
| Species | Human |
| Source | E.coli |
| ProteinLength | 1-673 aa |
| Form | If the delivery form is liquid, the default storage buffer is Tris/PBS-based buffer, 5%-50% glycerol. If the delivery form is lyophilized powder, the buffer before lyophilization is Tris/PBS-based buffer, 6% Trehalose, pH 8.0. |
| Molecular Mass | 81.2 kDa |
| Purity | Greater than 85% as determined by SDS-PAGE. |
| Storage | Store at -20°C/-80°C upon receipt, aliquoting is necessary for mutiple use. Avoid repeated freeze-thaw cycles. |
| Reconstitution | We recommend that this vial be briefly centrifuged prior to opening to bring the contents to the bottom. Please reconstitute protein in deionized sterile water to a concentration of 0.1-1.0 mg/mL. We recommend to add 5-50% of glycerol (final concentration) and aliquot for long-term storage at -20°C/-80°C. |

 Tel: 1-631-559-9269 1-516-512-3133

 Email: info@creative-biomart.com  Fax: 1-631-938-8127

 45-1 Ramsey Road, Shirley, NY 11967, USA

AA Sequence

MDPQRSPILLEVKGNIELKRPLIKAPSQLPLSGSRLKRRPDQMEDGLEPEKKRTRGLG
 ATTKITTSHPRVPSLTTVPQTQGQTTAQKVSCKTGPRCSTAIATGLKNQKPVPAVPV
 QKSGTSGVPPMAGGKKPSKRPAWDLKGQLCDLNAELKRCRERTQTLQENQQLQ
 DQLRDAQQVVKALGTERTTLEGLHAKVQAQAEQGGQELKNLRACVLELEERLSTQ
 EGLVQELQKKQVELQEERRGLMSQLEEKERRLQTSEAALSSSQAEVASLRQETVAQ
 AALLTEREERLHGLEMERRRLHNQLQELKGNIRVFCRVRPVLPGIPTPPGLLLFPS
 GPGGSPDPTRLSLRSRSDERRGTLGAPAPTRHDFSFDRVFPPGSGQDEVFEEIA
 MLVQSALDGYVPCIFAYGQTGSGKFTMEGGPGGDPQLEGLIPRALRHLFVSAQEL
 SGQGWTYSFVASYVEIYNETVRDLLATGTRKGGGEGEIRRAGPGSEELTVTNARY
 VPVSCEKEVDALLHLARQNRAVARTAQNERSSRSHSVFQLQISGEHSSRGLQCGAP
 LSLVDLAGSERLDPGLALGPGERERLRETQAINSSLSTLGLVIMALSNKESHVPYRNS
 KLTYLLQNSLGGSAKMLMFVNISPLEENVSESLNSLRFASKVNQCIVIGTAQANRK

GENE INFORMATION

Gene Name [KIFC1 kinesin family member C1 \[Homo sapiens \]](#)

Official Symbol [KIFC1](#)

Synonyms KIFC1; kinesin family member C1; kinesin like 2 , KNSL2; kinesin-like protein KIFC1; HSET; kinesin-like 2; kinesin-like protein 2; kinesin-related protein HSET; KNSL2; MGC1202; MGC149736; MGC149737;

Gene ID [3833](#)

mRNA Refseq [NM_002263](#)

Protein Refseq [NP_002254](#)

MIM [603763](#)

 Tel: 1-631-559-9269 1-516-512-3133

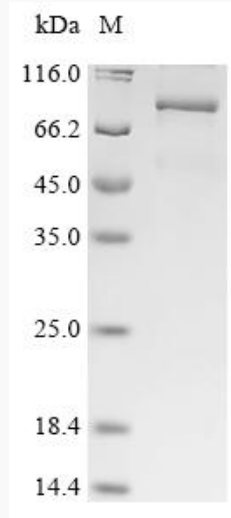
 Email: info@creative-biomart.com  Fax: 1-631-938-8127

 45-1 Ramsey Road, Shirley, NY 11967, USA

UniProt ID

Q9BW19

SDS-PAGE



 Tel: 1-631-559-9269 1-516-512-3133

 Email: info@creative-biomart.com  Fax: 1-631-938-8127

 45-1 Ramsey Road, Shirley, NY 11967, USA