

# Recombinant Human KIN Protein, Myc/DDK-tagged, C13 and N15-labeled

**Cat. No.** KIN-3203H    **Lot. No.** (See product label)

## SPECIFICATION

### Product Overview

KIN MS Standard C13 and N15-labeled recombinant protein (NP\_036443) with a C-terminal MYC/DDK tag, was expressed in HEK293 cells.

### Species

Human

### Source

HEK293

### Description

The protein encoded by this gene is a nuclear protein that forms intranuclear foci during proliferation and is redistributed in the nucleoplasm during the cell cycle. Short-wave ultraviolet light provokes the relocalization of the protein, suggesting its participation in the cellular response to DNA damage. Originally selected based on protein-binding with RecA antibodies, the mouse protein presents a limited similarity with a functional domain of the bacterial RecA protein, a characteristic shared by this human ortholog. Alternative splicing of this gene results in multiple transcript variants.

### Molecular Mass

45.4 kDa

### AA Sequence

MGKSDFLTPKAIANRIKSKGLQKLRWYCQMCQKQCRDENGFKCHCMSESHQRQLL  
 LAENPQQFMDYFSEEFRNDFLELLRRRFGTKRVHNNIVNEYISHREHIHMNATQ  
 WETLTDFTKWLGREGLCKVDETPKGWYIQYIDRDPETIRRQLELEKKKKQDLDDDEEK  
 TAKFIEEQVRRGLEGKEQEVPFTFELSRNDEEKVTFNLSKGACSSSGATSSKSSTL  
 GPSALKTIGSSASVKRKESSQSSTQSKEKKKKKSALDEIMEIEEKKRTARTDYWLQ  
 PEIIVKIITKKLGEKYHKKKAIVKEVIDKYTAVVKMIDSGDKLKLQTHLETVIPAPGKRI

 Tel: 1-631-559-9269    1-516-512-3133

 Email: [info@creative-biomart.com](mailto:info@creative-biomart.com)     Fax: 1-631-938-8127

 45-1 Ramsey Road, Shirley, NY 11967, USA

LVLNGGYRGNEGTLESINEKTF SATIVIETGPLKGRRVEGIQYEDISKLATRTRPLEQK  
LISEEDLAANDILDYKDDDDKV

**Purity** > 80% as determined by SDS-PAGE and Coomassie blue staining

**Stability** Stable for 3 months from receipt of products under proper storage and handling conditions.

**Storage** Store at -80 centigrade. Avoid repeated freeze-thaw cycles.

**Concentration** 50 µg/mL as determined by BCA

**Storage Buffer** 100 mM glycine, 25 mM Tris-HCl, pH 7.3.

## GENE INFORMATION

**Gene Name** [KIN Kin17 DNA and RNA binding protein \[ Homo sapiens \(human\) \]](#)

**Official Symbol** [KIN](#)

**Synonyms** KIN; KIN, antigenic determinant of recA protein homolog (mouse); antigenic determinant of recA protein (mouse) homolog; DNA/RNA-binding protein KIN17; KIN17; binding to curved DNA; BTCD;

**Gene ID** [22944](#)

**mRNA Refseq** [NM\\_012311](#)

**Protein Refseq** [NP\\_036443](#)

**MIM** [601720](#)

 Tel: 1-631-559-9269 1-516-512-3133

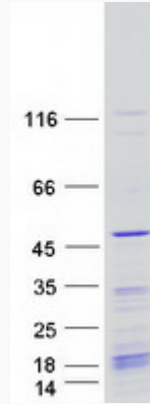
 Email: [info@creative-biomart.com](mailto:info@creative-biomart.com)  Fax: 1-631-938-8127

 45-1 Ramsey Road, Shirley, NY 11967, USA

UniProt ID

O60870

SDS-PAGE



 Tel: 1-631-559-9269 1-516-512-3133

 Email: [info@creative-biomart.com](mailto:info@creative-biomart.com)  Fax: 1-631-938-8127

 45-1 Ramsey Road, Shirley, NY 11967, USA