

Recombinant Human KIR2DL1 Protein, C-His-tagged

Cat. No. KIR2DL1-080H Lot. No. (See product label)

SPECIFICATION

Product Overview	Recombinant Human KIR2DL1 Protein with C-His tag was expressed in E. coli.
Species	Human
Source	E.coli
Description	<p>NKAT (NK-associated transcripts) gene products, known as killer immunoglobulin-like receptors or KIRs, downregulate the cytotoxicity of NK cells upon recognition of specific class I major histocompatibility complex (MHC) molecules on target cells. This family of receptors is characterized by an extracellular region with two to three immunoglobulin-superfamily domains and a cytoplasmic domain with an antigen receptor activation motif (ARAM). KIRs and other inhibitory receptors also possess a common cytoplasmic sequence (I/VxYxxL/V) known as an ITIM (immunoreceptor tyrosine-based inhibitory motif). The human inhibitory natural killer cell immunoglobulin-like receptor 2DL1, also designated KIR2DL1, CL-42, NKAT1, P58.1 or CD158a long form, is a 348 amino acid type I transmembrane protein. KIR2DL1 can bind human leukocyte antigen-C (HLA-C) via both polar and hydrophobic interactions through Met 44 in a binding pocket that coordinates Lys 80 of HLA-C.</p>
Molecular Mass	~25 kDa
AA Sequence	<p>HEGVHRKPSLLAHPGPLVKSEETVILQCWSDVMFEHLLHREGMFNDTLRLIGEHH DGVSKANFSISRMTQDLAGTYRCYGSVTHSPYQVSAPSDPLDIVIIGLYEKPSLSAQP GPTVLAGENVTLSCSSRSSYDMYHLSREGEAHERRLPAGPKVNGTFQADFPLGPAT</p>

 Tel: 1-631-559-9269 1-516-512-3133

 Email: info@creative-biomart.com  Fax: 1-631-938-8127

 45-1 Ramsey Road, Shirley, NY 11967, USA

HGGTYRCFGSFHDSPLYEWSKSSDPLLVSVTGNPSNSWPSPTPESSKTGNPRHLH

Purity

Transferred into competent cells and the supernatant was purified by NI column affinity chromatography and the purity is > 85% (by SDS-PAGE).

Notes

For research use only, not for use in diagnostic procedure.

Storage

Store at 4 centigrade short term. Aliquot and store at -20 centigrade long term. Avoid freeze-thaw cycles.

Concentration

≥0.5 mg/mL

Storage Buffer

PBS, 4M Urea, pH7.4

GENE INFORMATION

Gene Name

KIR2DL1 killer cell immunoglobulin-like receptor, two domains, long cytoplasmic tail, 1 [Homo sapiens (human)]

Official Symbol

KIR2DL1

Synonyms

KIR2DL1; killer cell immunoglobulin-like receptor, two domains, long cytoplasmic tail, 1; killer cell immunoglobulin-like receptor 2DL1; 47.11; CD158A; cl 42; nkat1; p58.1; NKAT-1; killer Ig receptor; p58 NK receptor CL-42/47.11; MHC class I NK cell receptor; killer inhibitory receptor 2-2-1; CD158 antigen-like family member A; natural killer-associated transcript 1; p58 NK cell inhibitory receptor NKR-K6; p58.1 MHC class-I-specific NK receptor; p58 killer cell inhibitory receptor KIR-K64; p58 natural killer cell receptor clones CL-42/47.11; NKAT; NKAT1; KIR221; KIR-K64;

Gene ID

3802

 Tel: 1-631-559-9269 1-516-512-3133

 Email: info@creative-biomart.com  Fax: 1-631-938-8127

 45-1 Ramsey Road, Shirley, NY 11967, USA

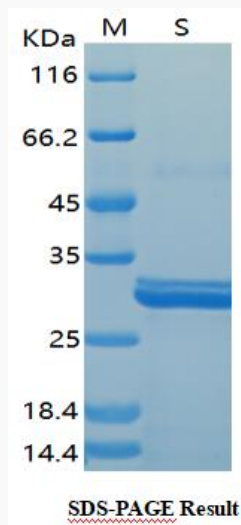
mRNA Refseq [NM_014218](#)

Protein Refseq [NP_055033](#)

MIM [604936](#)

UniProt ID [P43626](#)

SDS-PAGE



 Tel: 1-631-559-9269 1-516-512-3133

 Email: info@creative-biomart.com  Fax: 1-631-938-8127

 45-1 Ramsey Road, Shirley, NY 11967, USA