

Recombinant Human KIR2DL1 protein, His-tagged

Cat. No. KIR2DL1-3336H Lot. No. (See product label)

SPECIFICATION

Product Overview	Recombinant Human KIR2DL1 protein(His22~His245), fused with N-terminal His Tag, was expressed in E.coli.
Species	Human
Source	E.coli
ProteinLength	His22~His245
Form	PBS, pH7.4, containing 0.01% SKL, 1mM DTT, 5% Trehalose and Proclin300.
Molecular Mass	19kDa
Endotoxin	<1.0EU per 1g (determined by the LAL method)
Purity	> 95%
Storage	Avoid repeated freeze/thaw cycles. Store at 2-8°C for one month. Aliquot and store at -80°C for 12 months.
Reconstitution	Reconstitute in 10mM PBS (pH7.4) to a concentration of 0.1-1.0 mg/mL. Do not vortex.

GENE INFORMATION

 Tel: 1-631-559-9269 1-516-512-3133

 Email: info@creative-biomart.com  Fax: 1-631-938-8127

 45-1 Ramsey Road, Shirley, NY 11967, USA

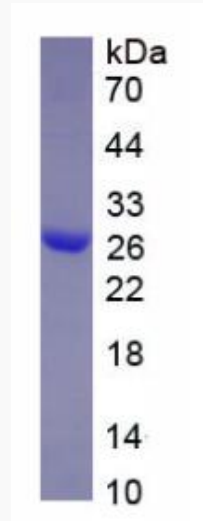
Gene Name	KIR2DL1 killer cell immunoglobulin-like receptor, two domains, long cytoplasmic tail, 1 [Homo sapiens]
Official Symbol	KIR2DL1
Synonyms	KIR2DL1; killer cell immunoglobulin-like receptor, two domains, long cytoplasmic tail, 1; killer cell immunoglobulin-like receptor 2DL1; 47.11; CD158A; cl 42; nkat1; p58.1; NKAT-1; killer Ig receptor; p58 NK receptor CL-42/47.11; MHC class I NK cell receptor; killer inhibitory receptor 2-2-1; CD158 antigen-like family member A; natural killer-associated transcript 1; p58 NK cell inhibitory receptor NKR-K6; p58.1 MHC class-I-specific NK receptor; p58 killer cell inhibitory receptor KIR-K64; p58 natural killer cell receptor clones CL-42/47.11; NKAT; NKAT1; KIR221; KIR-K64;
Gene ID	3802
mRNA Refseq	NM_014218
Protein Refseq	NP_055033
MIM	604936
UniProt ID	P43626

 Tel: 1-631-559-9269 1-516-512-3133

 Email: info@creative-biomart.com  Fax: 1-631-938-8127

 45-1 Ramsey Road, Shirley, NY 11967, USA

SDS-PAGE



 Tel: 1-631-559-9269 1-516-512-3133

 Email: info@creative-biomart.com  Fax: 1-631-938-8127

 45-1 Ramsey Road, Shirley, NY 11967, USA