

Recombinant Human KIR2DL1 Protein (Met1-His245), C-His tagged

Cat. No. KIR2DL1-4335H Lot. No. (See product label)

SPECIFICATION

Product Overview	Recombinant human KIR2DL1 (Met1-His245) fused with the C-terminal His tag was expressed in Mammalian cells.
Species	Human
Source	Mammalian Cells
ProteinLength	Met1-His245
Form	Lyophilized powder/frozen liquid
Molecular Mass	26.95 kDa
Endotoxin	< 1.0 EU/μg of the protein as determined by the LAL method.
Purity	>90% as determined by SDS-PAGE.
Notes	For research use only.
Storage	Use a manual defrost freezer and avoid repeated freeze thaw cycles. Store at 2 to 8 centigrade for one week. Store at -20 to -80 centigrade for twelve months from the date of receipt.
Storage Buffer	Supplied as solution form in PBS or lyophilized from PBS.

 Tel: 1-631-559-9269 1-516-512-3133

 Email: info@creative-biomart.com  Fax: 1-631-938-8127

 45-1 Ramsey Road, Shirley, NY 11967, USA

Reconstitution Reconstitute in sterile water for a stock solution.

Shipping They are shipped out with dry ice/blue ice unless customers require otherwise.

GENE INFORMATION

Gene Name KIR2DL1 killer cell immunoglobulin-like receptor, two domains, long cytoplasmic tail, 1 [Homo sapiens (human)]

Official Symbol KIR2DL1

Synonyms KIR2DL1; killer cell immunoglobulin-like receptor, two domains, long cytoplasmic tail, 1; killer cell immunoglobulin-like receptor 2DL1; 47.11; CD158A; cl 42; nkat1; p58.1; NKAT-1; killer Ig receptor; p58 NK receptor CL-42/47.11; MHC class I NK cell receptor; killer inhibitory receptor 2-2-1; CD158 antigen-like family member A; natural killer-associated transcript 1; p58 NK cell inhibitory receptor NKR-K6; p58.1 MHC class-I-specific NK receptor; p58 killer cell inhibitory receptor KIR-K64; p58 natural killer cell receptor clones CL-42/47.11; NKAT; NKAT1; KIR221; KIR-K64;

Gene ID 3802

mRNA Refseq NM_014218

Protein Refseq NP_055033

MIM 604936

UniProt ID P43626

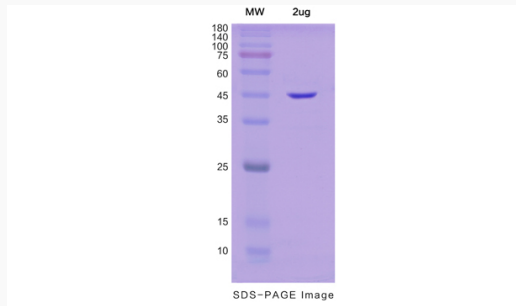
 Tel: 1-631-559-9269 1-516-512-3133

 Email: info@creative-biomart.com  Fax: 1-631-938-8127

 45-1 Ramsey Road, Shirley, NY 11967, USA



SDS-PAGE



Tel: 1-631-559-9269 1-516-512-3133

Email: info@creative-biomart.com Fax: 1-631-938-8127

45-1 Ramsey Road, Shirley, NY 11967, USA