

# Recombinant Human KIR2DL1 protein, His-Avi-tagged, Biotinylated

**Cat. No.** KIR2DL1-626HB    **Lot. No.** (See product label)

## SPECIFICATION

<b>Product Overview</b>	Biotinylated Recombinant Human KIR2DL1 Protein is expressed from mammalian with His Tag and Avi Tag at the C-terminal. It contains His22-Arg242.
<b>Species</b>	Human
<b>Source</b>	HEK293
<b>ProteinLength</b>	His22-Arg242
<b>Description</b>	KIR2DL1 (2DL1, formerly NKAT1, designated CD158a) is a 348 amino acid (aa) type I transmembrane glycoprotein that belongs to the human killer cell Ig-like receptor (KIR) family. KIR2DL1 is a receptor on natural killer (NK) cells for some HLA-C alleles such as w4 and w6. Inhibits the activity of NK cells thus preventing cell lysis.
<b>Form</b>	Supplied as 0.22um filtered solution in PBS (pH 7.4).
<b>Molecular Mass</b>	The protein has a predicted MW of 27.1 KDa. Due to glycosylation, the protein migrates to 48-60KDa based on Bis-Tris PAGE result.
<b>Endotoxin</b>	Less than 0.05EU per ug by the LAL method.
<b>Purity</b>	> 95% as determined by Tris-Bis PAGE; > 95% as determined by HPLC
<b>Storage</b>	The product should be stored at -70°C. Please do not repeated freeze-thaw cycles.

 Tel: 1-631-559-9269    1-516-512-3133

 Email: [info@creative-biomart.com](mailto:info@creative-biomart.com)     Fax: 1-631-938-8127

 45-1 Ramsey Road, Shirley, NY 11967, USA

**Conjugation**                      Biotin

## GENE INFORMATION

**Gene Name**                      [KIR2DL1](#)

**Official Symbol**                [KIR2DL1](#)

**Synonyms**

CD158 antigen-like family member A; CD158a antigen; CD158a; CD158Ankat1; cl-42; killer cell immunoglobulin-like receptor 2DL1; killer cell immunoglobulin-like receptor, two domains, long cytoplasmic tail, 1; killer Ig receptor; killer inhibitory receptor 2-2-1; KIR221; KIR2DL1; MHC class I NK cell receptor; Natural killer-associated transcript 1; NKAT; NKAT-1; NKAT1KIR-K64; p58 killer cell inhibitory receptor KIR-K64; p58 natural killer cell receptor clones CL-42/47.11; p58 NK cell inhibitory receptor NKR-K6,47.11; p58 NK receptor CL-42/47.11; p58.1 MHC class-I-specific NK receptor; p58.1

**Gene ID**                            [3802](#)

**mRNA Refseq**                    [NM\\_014218.3](#)

**Protein Refseq**                   [NP\\_055033.2](#)

**MIM**                                [604936](#)

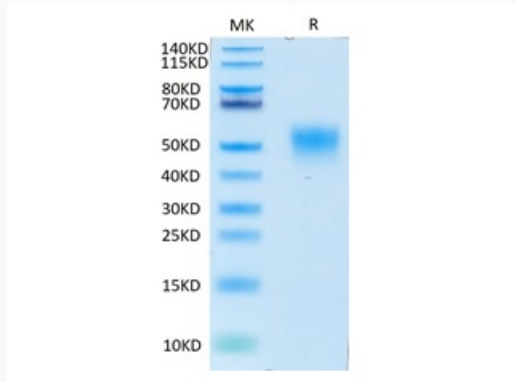
**UniProt ID**                        [P43626](#)

 Tel: 1-631-559-9269    1-516-512-3133

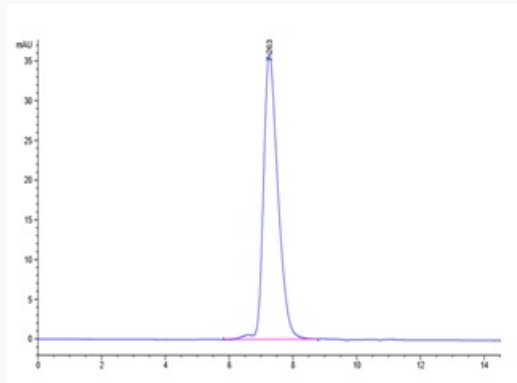
 Email: [info@creative-biomart.com](mailto:info@creative-biomart.com)     Fax: 1-631-938-8127

 45-1 Ramsey Road, Shirley, NY 11967, USA

**Tris-Bis PAGE of  
KIR2DL1-626HB**



**SEC-HPLC of  
KIR2DL1-626HB**



 Tel: 1-631-559-9269 1-516-512-3133

 Email: [info@creative-biomart.com](mailto:info@creative-biomart.com)  Fax: 1-631-938-8127

 45-1 Ramsey Road, Shirley, NY 11967, USA