

Recombinant Human KIR2DL1 protein, His & GST-tagged

Cat. No. KIR2DL1-7063H **Lot. No.** (See product label)

SPECIFICATION

Product Overview	Recombinant Human KIR2DL1 aa. (His22~Pro348) fused with N-terminal His & GST tag was produced in E. coli cells.
Species	Human
Source	E.coli
ProteinLength	His22~Pro348
Form	Freeze-dried powder
Molecular Mass	70kDa as determined by SDS-PAGE reducing conditions.
Endotoxin	<1.0EU per 1ug (determined by the LAL method)
Purity	>98%
Characteristic	The isoelectric point is 6.2.
Applications	SDS-PAGE; WB; ELISA; IP; CoIP; Purification; Amine Reactive Labeling.
Stability	The thermal stability is described by the loss rate of the target protein. The loss rate was determined by accelerated thermal degradation test, that is, incubate the protein at 37°C for 48h, and no obvious degradation and precipitation were observed. (Referring from China Biological Products Standard, which was calculated by the

 Tel: 1-631-559-9269 1-516-512-3133

 Email: info@creative-biomart.com  Fax: 1-631-938-8127

 45-1 Ramsey Road, Shirley, NY 11967, USA

Arrhenius equation.) The loss of this protein is less than 5% within the expiration date under appropriate storage condition.

Storage

Avoid repeated freeze/thaw cycles. Store at 2-8°C for one month. Aliquot and store at -80°C for 12 months.

Concentration

200ug/mL

Storage buffer

20mM Tris, 150mM NaCl, pH8.0, containing 1mM EDTA, 1mM DTT, 0.01% sarcosyl, 5%Trehalose and Proclin300

Reconstitution

Reconstitute in 20mM Tris, 150mM NaCl (pH8.0) to a concentration of 0.1-1.0 mg/mL. Do not vortex.

GENE INFORMATION

Gene Name

KIR2DL1 killer cell immunoglobulin like receptor, two Ig domains and long cytoplasmic tail 1 [Homo sapiens (human)]

Official Symbol

KIR2DL1

Synonyms

KIR2DL1; killer cell immunoglobulin like receptor, two Ig domains and long cytoplasmic tail 1; NKAT; NKAT1; p58.1; CD158A; KIR221; NKAT-1; KIR-K64; killer cell immunoglobulin-like receptor 2DL1; CD158 antigen-like family member A; MHC class I NK cell receptor; killer cell immunoglobulin-like receptor, two domains, long cytoplasmic tail, 1; killer inhibitory receptor 2-2-1; natural killer-associated transcript 1; p58 NK cell inhibitory receptor NKR-K6; p58 NK receptor CL-42/47.11; p58 killer cell inhibitory receptor KIR-K64; p58 natural killer cell receptor clones CL-42/47.11; p58.1 MHC class-I-specific NK receptor

Gene ID

3802

 Tel: 1-631-559-9269 1-516-512-3133

 Email: info@creative-biomart.com  Fax: 1-631-938-8127

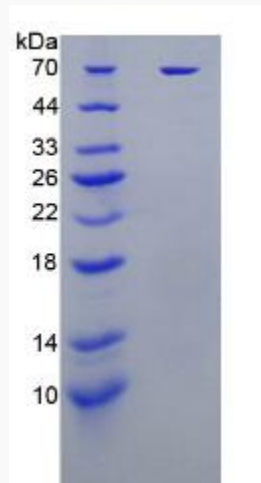
 45-1 Ramsey Road, Shirley, NY 11967, USA

mRNA Refseq [NM_014218.2](#)

Protein Refseq [NP_055033.2](#)

UniProt ID [P43626](#)

SDS-PAGE



 Tel: 1-631-559-9269 1-516-512-3133

 Email: info@creative-biomart.com  Fax: 1-631-938-8127

 45-1 Ramsey Road, Shirley, NY 11967, USA