

## Recombinant Human KIR2DL2 Protein, C-His-tagged

Cat. No. KIR2DL2-081H Lot. No. (See product label)

### SPECIFICATION

<b>Product Overview</b>	Recombinant Human KIR2DL2 Protein with C-His tag was expressed in E. coli.
<b>Species</b>	Human
<b>Source</b>	E.coli
<b>Description</b>	<p>NKAT (NK-associated transcripts) gene products, known as killer immunoglobulin-like receptors or KIRs, downregulate the cytotoxicity of NK cells upon recognition of specific class I major histocompatibility complex (MHC) molecules on target cells. This family of receptors is characterized by an extracellular region with two to three immunoglobulin-superfamily domains and a cytoplasmic domain with an antigen receptor activation motif (ARAM). KIRs and other inhibitory receptors also possess a common cytoplasmic sequence (I/VxYxxL/V) known as an ITIM (immunoreceptor tyrosine-based inhibitory motif). The human inhibitory natural killer cell immunoglobulin-like receptor 2DL1, also designated KIR2DL1, CL-42, NKAT1, P58.1 or CD158a long form, is a 348 amino acid type I transmembrane protein. KIR2DL1 can bind human leukocyte antigen-C (HLA-C) via both polar and hydrophobic interactions through Met 44 in a binding pocket that coordinates Lys 80 of HLA-C.</p>
<b>Molecular Mass</b>	~25 kDa
<b>AA Sequence</b>	<p>HEGVHRKPSLLAHPGRLVKSEETVILQCWSDVRFEHFLHREGKFKDTLHLIGEHH            GVSKANFSIGPMMQDLAGTYRCYGSVTHSPYQLSAPSDPLDIVITGLYEKPSLSAQP            GPTVLAGESVTLSCSSRSSYDMYHLSREGEAHECRFSAGPKVNGTFQADFPLGPAT</p>

 Tel: 1-631-559-9269 1-516-512-3133

 Email: [info@creative-biomart.com](mailto:info@creative-biomart.com)  Fax: 1-631-938-8127

 45-1 Ramsey Road, Shirley, NY 11967, USA

HGGTYRCFGSFRDSPYEWSNSSDPLLVSIGNPSNSWSPTEPSSKTGNPRHLH

**Purity**

Transferred into competent cells and the supernatant was purified by NI column affinity chromatography and the purity is > 85% (by SDS-PAGE).

**Notes**

For research use only, not for use in diagnostic procedure.

**Storage**

Store at 4 centigrade short term. Aliquot and store at -20 centigrade long term. Avoid freeze-thaw cycles.

**Concentration**

≥0.5 mg/mL

**Storage Buffer**

PBS, 4M Urea, pH7.4

**GENE INFORMATION**

**Gene Name**

KIR2DL2 killer cell immunoglobulin-like receptor, two domains, long cytoplasmic tail, 2 [ Homo sapiens (human) ]

**Official Symbol**

KIR2DL2

**Synonyms**

KIR2DL2; killer cell immunoglobulin-like receptor, two domains, long cytoplasmic tail, 2; killer cell immunoglobulin-like receptor 2DL2; CD158B1; CD158k; cl 43; nkat6; NKAT-6; p58 NK receptor CL-43; MHC class I NK cell receptor; CD158 antigen-like family member B1; natural killer-associated transcript 6; p58 natural killer cell receptor clone CL-43; NKAT6; p58.2; CD158b;

**Gene ID**

3803

**mRNA Refseq**

NM\_014219

 Tel: 1-631-559-9269 1-516-512-3133

 Email: [info@creative-biomart.com](mailto:info@creative-biomart.com)  Fax: 1-631-938-8127

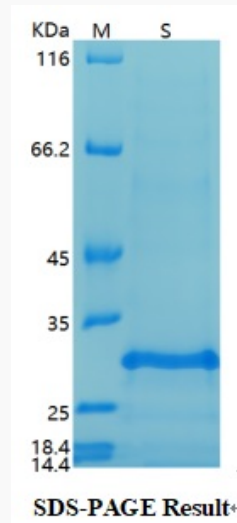
 45-1 Ramsey Road, Shirley, NY 11967, USA

**Protein Refseq** NP\_055034

**MIM** 604937

**UniProt ID** P43627

**SDS-PAGE**



 Tel: 1-631-559-9269 1-516-512-3133

 Email: [info@creative-biomart.com](mailto:info@creative-biomart.com)  Fax: 1-631-938-8127

 45-1 Ramsey Road, Shirley, NY 11967, USA