

## Recombinant Human KIR2DL2 protein, His-Avi-tagged

**Cat. No.** KIR2DL2-627H    **Lot. No.** (See product label)

### SPECIFICATION

|                         |  |
|-------------------------|--|
| <b>Product Overview</b> | Recombinant Human KIR2DL2 Protein is expressed from mammalian with His Tag and Avi Tag at the C-terminal. It contains His22-His245.  |
| <b>Species</b>          | Human  |
| <b>Source</b>           | HEK293   |
| <b>ProteinLength</b>    | His22-His245   |
| <b>Description</b>      | KIR2DL2 (2DL2, formerly NKAT6, designated CD158b) is a 348 amino acid (aa) type I transmembrane glycoprotein that belongs to the human killer cell Ig-like receptor (KIR) family. KIRs are expressed on human CD56dim NK cells and T cell subsets, and regulate effector functions in the innate immune system. KIR2DL2 is receptor on natural killer (NK) cells for HLA-Cw1, 3, 7, and 8 allotypes. Inhibits the activity of NK cells thus preventing cell lysis. |
| <b>Form</b>             | Supplied as 0.22um filtered solution in PBS (pH 7.4).  |
| <b>Molecular Mass</b>   | The protein has a predicted MW of 27.4 KDa. Due to glycosylation, the protein migrates to 45-60KDa based on Bis-Tris PAGE result.  |
| <b>Endotoxin</b>        | Less than 0.1 EU per ug by the LAL method.   |
| <b>Purity</b>           | > 95% as determined by Tris-Bis PAGE; > 95% as determined by HPLC  |

 Tel: 1-631-559-9269    1-516-512-3133

 Email: [info@creative-biomart.com](mailto:info@creative-biomart.com)     Fax: 1-631-938-8127

 45-1 Ramsey Road, Shirley, NY 11967, USA

**Storage** The product should be stored at -70°C. Please do not repeated freeze-thaw cycles.

## GENE INFORMATION

**Gene Name** KIR2DL2

**Official Symbol** KIR2DL2

**Synonyms** AGS2; hN2; neurogenic locus notch homolog protein 2; Notch (Drosophila) homolog 2; notch 2Notch homolog 2 (Drosophila); Notch homolog 2; Notch2; Notch-2

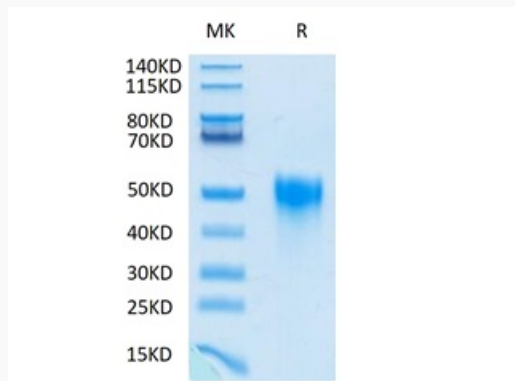
**Gene ID** 3803

**mRNA Refseq** NM\_014219.2

**Protein Refseq** NP\_055034.2

**UniProt ID** P43627

**Tris-Bis PAGE of  
KIR2DL2-627H**

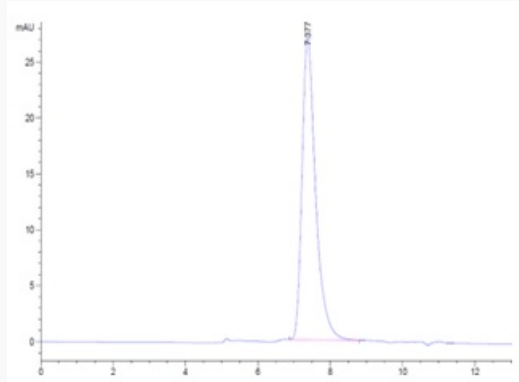


 Tel: 1-631-559-9269 1-516-512-3133

 Email: [info@creative-biomart.com](mailto:info@creative-biomart.com)  Fax: 1-631-938-8127

 45-1 Ramsey Road, Shirley, NY 11967, USA

**SEC-HPLC of  
KIR2DL2-627H**



 Tel: 1-631-559-9269 1-516-512-3133

 Email: [info@creative-biomart.com](mailto:info@creative-biomart.com)  Fax: 1-631-938-8127

 45-1 Ramsey Road, Shirley, NY 11967, USA