

## Recombinant Human KIR2DL3 Protein, C-His-tagged

Cat. No. KIR2DL3-082H Lot. No. (See product label)

### SPECIFICATION

<b>Product Overview</b>	Recombinant Human KIR2DL3 Protein with C-His tag was expressed in E. coli.
<b>Species</b>	Human
<b>Source</b>	E.coli
<b>Description</b>	<p>Killer cell immunoglobulin-like receptors (KIRs) are type 1 transmembrane glycoproteins expressed by natural killer cells and subsets of CD4, CD8, and <math>\gamma\delta</math> T cells. Analogous to the diversity of their human leucocyte antigen class I (HLA Class I) ligands, the KIR genes are polymorphic and the content of the KIR gene cluster varies among haplotypes, although several "framework" genes are found in all haplotypes. The KIR proteins are characterized by the number of extracellular immunoglobulin-superfamily domains (2D or 3D) and by whether they have a long (L) or short (S) cytoplasmic domain. KIR proteins with the long cytoplasmic domain transduce inhibitory signals upon ligand binding via an immune tyrosine-based inhibitory motif (ITIM), while KIR proteins with the short cytoplasmic domain lack an ITIM and instead transduce activating signals. KIR proteins play an important role in the regulation of the immune response. Combinations of KIR and HLA class I variants influence susceptibility to autoimmunity and infectious disease, as well as outcomes of haematopoietic stem cell transplantation.</p>
<b>Molecular Mass</b>	~25 kDa
<b>AA Sequence</b>	HEGVHRKPSLLAHPGPLVKSEETVILQCWSDVRFQHFLLHREGKFKDTLHLIGEHH

 Tel: 1-631-559-9269 1-516-512-3133

 Email: [info@creative-biomart.com](mailto:info@creative-biomart.com)  Fax: 1-631-938-8127

 45-1 Ramsey Road, Shirley, NY 11967, USA

GVSKANFSIGPMMQDLAGTYRCYGSVTHSPYQLSAPSDPLDIVITGLYEKPSLSAQP  
 GPTVLAGESVTLSCSSRSSYDMYHLSREGEAHERRFSAGPKVNGTFQADFPPLGPAT  
 HGGTYRCFGSFRDSPYEWSNSSDPLLVSVTGNPSNSWPSPTEPSSETGNPRHLH

**Purity**

Transferred into competent cells and the supernatant was purified by NI column affinity chromatography and the purity is > 85% (by SDS-PAGE).

**Notes**

For research use only, not for use in diagnostic procedure.

**Storage**

Store at 4 centigrade short term. Aliquot and store at -20 centigrade long term. Avoid freeze-thaw cycles.

**Concentration**

≥0.5 mg/mL

**Storage Buffer**

PBS, 4M Urea, pH7.4

## GENE INFORMATION

**Gene Name**

KIR2DL3 killer cell immunoglobulin-like receptor, two domains, long cytoplasmic tail, 3 [ Homo sapiens (human) ]

**Official Symbol**

KIR2DL3

**Synonyms**

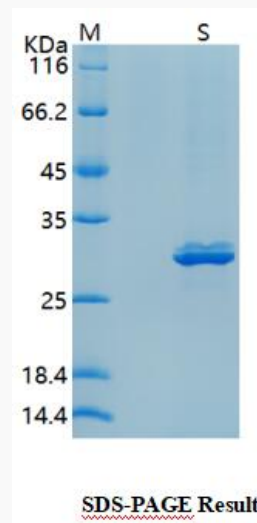
KIR2DL3; killer cell immunoglobulin-like receptor, two domains, long cytoplasmic tail, 3; killer cell immunoglobulin-like receptor 2DL3; CD158B2; cl 6; nkat2; nkat2a; nkat2b; p58; NKAT-2; NK-receptor; p58 NK receptor CL-6; MHC class I NK cell receptor; killer inhibitory receptor cl 2-3; CD158 antigen-like family member B2; natural killer associated transcript 2; natural killer-associated transcript 2; p58.2 MHC class-I specific NK receptor; p58.2 MHC class-I-specific NK receptor; p58 natural killer cell receptor clone CL-6; natural killer cell inhibitory receptor KIR2DL3; NKAT; GL183; NKAT2; CD158b; NKAT2A; NKAT2B; KIR-K7b; KIR-K7c; KIRCL23; KIR-

 Tel: 1-631-559-9269 1-516-512-3133

 Email: [info@creative-biomart.com](mailto:info@creative-biomart.com)  Fax: 1-631-938-8127

 45-1 Ramsey Road, Shirley, NY 11967, USA

023GB; MGC129943;

**Gene ID** 3804**mRNA Refseq** NM\_015868**Protein Refseq** NP\_056952**MIM** 604938**UniProt ID** P43628**SDS-PAGE** Tel: 1-631-559-9269 1-516-512-3133 Email: [info@creative-biomart.com](mailto:info@creative-biomart.com)  Fax: 1-631-938-8127 45-1 Ramsey Road, Shirley, NY 11967, USA