

Active Recombinant Human KIR2DL3 protein, hFc&His-tagged

Cat. No. KIR2DL3-1272H **Lot. No.** (See product label)

SPECIFICATION

Product Overview	Recombinant Human NKAT-2/KIR2DL3/CD158b2 Protein is produced by HEK293 expression system. The target protein is expressed with sequence (His22-His245) of human KIR2DL3/CD158b2 (Accession #NP_056952.2) fused with an Fc, 6×His tag at the C-terminus.
Species	Human
Source	HEK293
ProteinLength	His22-His245
Form	Lyophilized from a 0.22 μm filtered solution of PBS, pH 7.4.
Bio-activity	Measured by its binding ability in a functional ELISA. Immobilized Human KIR2DL3 at 1 μg/mL (100 μL/well) can bind KIR2DL3 Rabbit pAb with a linear range of 2-54 ng/mL.
Molecular Mass	70-80 kDa
Endotoxin	< 0.1 EU/μg of the protein by LAL method.
Purity	> 95% by SDS-PAGE.
Storage	Store the lyophilized protein at -20°C to -80 °C for long term. After reconstitution, the protein solution is stable at -20 °C for 3 months, at 2-8 °C for

 Tel: 1-631-559-9269 1-516-512-3133

 Email: info@creative-biomart.com  Fax: 1-631-938-8127

 45-1 Ramsey Road, Shirley, NY 11967, USA

up to 1 week.

Reconstitution Reconstitute to a concentration of 0.1-0.5 mg/mL in sterile distilled water.

GENE INFORMATION

Gene Name KIR2DL3 killer cell immunoglobulin-like receptor, two domains, long cytoplasmic tail, 3 [Homo sapiens]

Official Symbol KIR2DL3

Synonyms KIR2DL3; killer cell immunoglobulin-like receptor, two domains, long cytoplasmic tail, 3; killer cell immunoglobulin-like receptor 2DL3; CD158B2; cl 6; nkat2; nkat2a; nkat2b; p58; NKAT-2; NK-receptor; p58 NK receptor CL-6; MHC class I NK cell receptor; killer inhibitory receptor cl 2-3; CD158 antigen-like family member B2; natural killer associated transcript 2; natural killer-associated transcript 2; p58.2 MHC class-I specific NK receptor; p58.2 MHC class-I-specific NK receptor; p58 natural killer cell receptor clone CL-6; natural killer cell inhibitory receptor KIR2DL3; NKAT; GL183; NKAT2; CD158b; NKAT2A; NKAT2B; KIR-K7b; KIR-K7c; KIRCL23; KIR-023GB; MGC129943;

Gene ID 3804

mRNA Refseq NM_015868

Protein Refseq NP_056952

MIM 604938

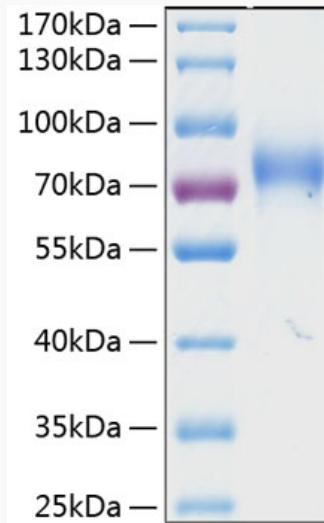
UniProt ID P43628

 Tel: 1-631-559-9269 1-516-512-3133

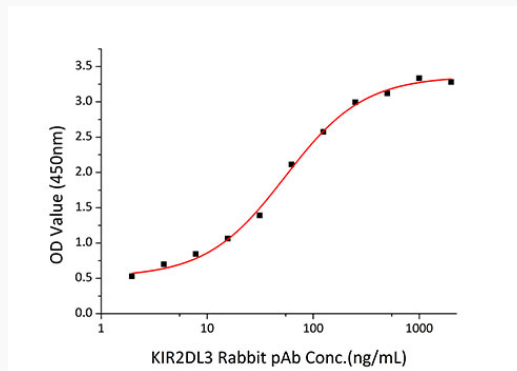
 Email: info@creative-biomart.com  Fax: 1-631-938-8127

 45-1 Ramsey Road, Shirley, NY 11967, USA

SDS-PAGE



Activity



 Tel: 1-631-559-9269 1-516-512-3133

 Email: info@creative-biomart.com  Fax: 1-631-938-8127

 45-1 Ramsey Road, Shirley, NY 11967, USA