

Recombinant Human KIR2DL3 Protein (His22-Pro341), N-GST tagged

Cat. No. KIR2DL3-1315H Lot. No. (See product label)

SPECIFICATION

Product Overview	Recombinant Human CD158b2/KIR2DL3 (His22-Pro341) fused with the N-GST tag was expressed in E. coli.
Species	Human
Source	E.coli
ProteinLength	His22-Pro341
Form	Lyophilized powder/frozen liquid
Molecular Mass	62.43 kDa
Purity	>90% as determined by SDS-PAGE.
Notes	For research use only.
Storage	Use a manual defrost freezer and avoid repeated freeze thaw cycles. Store at 2 to 8 centigrade for one week. Store at -20 to -80 centigrade for twelve months from the date of receipt.
Storage Buffer	0.01M PBS, pH 7.4, 0.02% NLS
Reconstitution	Reconstitute in sterile water for a stock solution.

 Tel: 1-631-559-9269 1-516-512-3133

 Email: info@creative-biomart.com  Fax: 1-631-938-8127

 45-1 Ramsey Road, Shirley, NY 11967, USA

Shipping They are shipped out with dry ice/blue ice unless customers require otherwise.

GENE INFORMATION

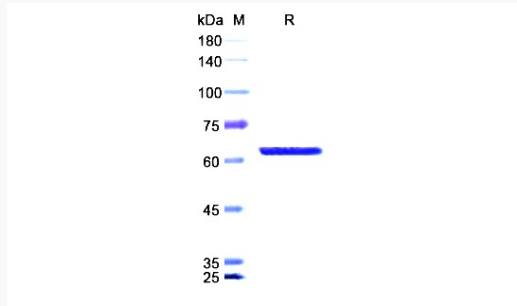
Gene Name	KIR2DL3 killer cell immunoglobulin-like receptor, two domains, long cytoplasmic tail, 3 [Homo sapiens (human)]
Official Symbol	KIR2DL3
Synonyms	KIR2DL3; killer cell immunoglobulin-like receptor, two domains, long cytoplasmic tail, 3; killer cell immunoglobulin-like receptor 2DL3; CD158B2; cl 6; nkat2; nkat2a; nkat2b; p58; NKAT-2; NK-receptor; p58 NK receptor CL-6; MHC class I NK cell receptor; killer inhibitory receptor cl 2-3; CD158 antigen-like family member B2; natural killer associated transcript 2; natural killer-associated transcript 2; p58.2 MHC class-I specific NK receptor; p58.2 MHC class-I-specific NK receptor; p58 natural killer cell receptor clone CL-6; natural killer cell inhibitory receptor KIR2DL3; NKAT; GL183; NKAT2; CD158b; NKAT2A; NKAT2B; KIR-K7b; KIR-K7c; KIRCL23; KIR-023GB; MGC129943;
Gene ID	3804
mRNA Refseq	NM_015868
Protein Refseq	NP_056952
MIM	604938
UniProt ID	P43628

 Tel: 1-631-559-9269 1-516-512-3133

 Email: info@creative-biomart.com  Fax: 1-631-938-8127

 45-1 Ramsey Road, Shirley, NY 11967, USA

SDS-PAGE



 Tel: 1-631-559-9269 1-516-512-3133

 Email: info@creative-biomart.com  Fax: 1-631-938-8127

 45-1 Ramsey Road, Shirley, NY 11967, USA