

# Recombinant Human KIR2DL3 Protein (Met1-His245), C-His tagged

**Cat. No.** KIR2DL3-4338H    **Lot. No.** (See product label)

## SPECIFICATION

<b>Product Overview</b>	Recombinant human KIR2DL3 (Met1-His245) fused with the C-terminal His tag was expressed in Mammalian cells.
<b>Species</b>	Human
<b>Source</b>	Mammalian Cells
<b>ProteinLength</b>	Met1-His245
<b>Form</b>	Lyophilized powder/frozen liquid
<b>Molecular Mass</b>	27.06 kDa
<b>Endotoxin</b>	< 1.0 EU/μg of the protein as determined by the LAL method.
<b>Purity</b>	>90% as determined by SDS-PAGE.
<b>Notes</b>	For research use only.
<b>Storage</b>	Use a manual defrost freezer and avoid repeated freeze thaw cycles. Store at 2 to 8 centigrade for one week. Store at -20 to -80 centigrade for twelve months from the date of receipt.
<b>Storage Buffer</b>	Supplied as solution form in PBS or lyophilized from PBS.

 Tel: 1-631-559-9269    1-516-512-3133

 Email: [info@creative-biomart.com](mailto:info@creative-biomart.com)     Fax: 1-631-938-8127

 45-1 Ramsey Road, Shirley, NY 11967, USA

**Reconstitution** Reconstitute in sterile water for a stock solution.

**Shipping** They are shipped out with dry ice/blue ice unless customers require otherwise.

## GENE INFORMATION

**Gene Name** [KIR2DL3 killer cell immunoglobulin-like receptor, two domains, long cytoplasmic tail, 3 \[ Homo sapiens \(human\) \]](#)

**Official Symbol** [KIR2DL3](#)

**Synonyms** KIR2DL3; killer cell immunoglobulin-like receptor, two domains, long cytoplasmic tail, 3; killer cell immunoglobulin-like receptor 2DL3; CD158B2; cl 6; nkat2; nkat2a; nkat2b; p58; NKAT-2; NK-receptor; p58 NK receptor CL-6; MHC class I NK cell receptor; killer inhibitory receptor cl 2-3; CD158 antigen-like family member B2; natural killer associated transcript 2; natural killer-associated transcript 2; p58.2 MHC class-I specific NK receptor; p58.2 MHC class-I-specific NK receptor; p58 natural killer cell receptor clone CL-6; natural killer cell inhibitory receptor KIR2DL3; NKAT; GL183; NKAT2; CD158b; NKAT2A; NKAT2B; KIR-K7b; KIR-K7c; KIRCL23; KIR-023GB; MGC129943;

**Gene ID** [3804](#)

**mRNA Refseq** [NM\\_015868](#)

**Protein Refseq** [NP\\_056952](#)

**MIM** [604938](#)

**UniProt ID** [P43628](#)

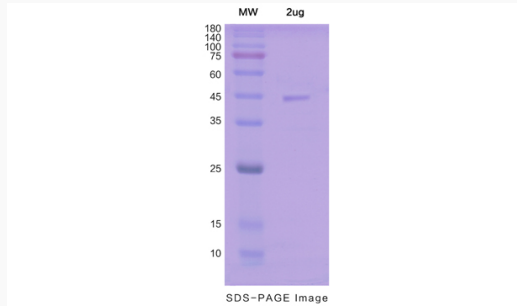
 Tel: 1-631-559-9269 1-516-512-3133

 Email: [info@creative-biomart.com](mailto:info@creative-biomart.com)  Fax: 1-631-938-8127

 45-1 Ramsey Road, Shirley, NY 11967, USA



SDS-PAGE



Tel: 1-631-559-9269 1-516-512-3133

Email: [info@creative-biomart.com](mailto:info@creative-biomart.com) Fax: 1-631-938-8127

45-1 Ramsey Road, Shirley, NY 11967, USA