

Recombinant Human KIR2DL3 protein, His-Avi-tagged, Biotinylated

Cat. No. KIR2DL3-628HB **Lot. No.** (See product label)

SPECIFICATION

Product Overview	Biotinylated Recombinant Human KIR2DL3 protein(P43628)(His22-His245), fused with C-terminal His and Avi tag, was expressed in HEK293.
Species	Human
Source	HEK293
ProteinLength	His22-His245
Tag	C-His-Avi
Conjugation/Label	Biotin
Form	Lyophilized from 0.22µm filtered solution in PBS (pH 7.4). Normally 5% trehalose is added as protectant before lyophilization.
Molecular Mass	The protein has a predicted MW of 27.3 kDa. Due to glycosylation, the protein migrates to 45-52 kDa based on Tris-Bis PAGE result.
Endotoxin	Less than 1EU per µg by the LAL method.
Purity	> 95% as determined by Tris-Bis PAGE;> 95% as determined by HPLC
Storage	Reconstituted protein stable at -80°C for 12 months, 4°C for 1 week. Use a manual

 Tel: 1-631-559-9269 1-516-512-3133

 Email: info@creative-biomart.com  Fax: 1-631-938-8127

 45-1 Ramsey Road, Shirley, NY 11967, USA

defrost freezer and avoid repeated freeze-thaw cycles.

Reconstitution

Centrifuge tubes before opening. Reconstituting to a concentration more than 100 µg/ml is recommended. Dissolve the lyophilized protein in distilled water.

Conjugation

Biotin

GENE INFORMATION

Gene Name

KIR2DL3 killer cell immunoglobulin-like receptor, two domains, long cytoplasmic tail, 3 [Homo sapiens]

Official Symbol

KIR2DL3

Synonyms

KIR2DL3; killer cell immunoglobulin-like receptor, two domains, long cytoplasmic tail, 3; killer cell immunoglobulin-like receptor 2DL3; CD158B2; cl 6; nkat2; nkat2a; nkat2b; p58; NKAT-2; NK-receptor; p58 NK receptor CL-6; MHC class I NK cell receptor; killer inhibitory receptor cl 2-3; CD158 antigen-like family member B2; natural killer associated transcript 2; natural killer-associated transcript 2; p58.2 MHC class-I specific NK receptor; p58.2 MHC class-I-specific NK receptor; p58 natural killer cell receptor clone CL-6; natural killer cell inhibitory receptor KIR2DL3; NKAT; GL183; NKAT2; CD158b; NKAT2A; NKAT2B; KIR-K7b; KIR-K7c; KIRCL23; KIR-023GB; MGC129943;

Gene ID

3804

mRNA Refseq

NM_015868

Protein Refseq


NP_056952

MIM

604938

 Tel: 1-631-559-9269 1-516-512-3133

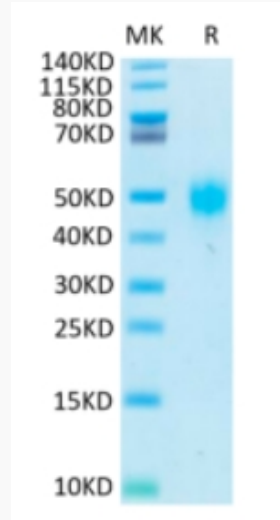
 Email: info@creative-biomart.com  Fax: 1-631-938-8127

 45-1 Ramsey Road, Shirley, NY 11967, USA

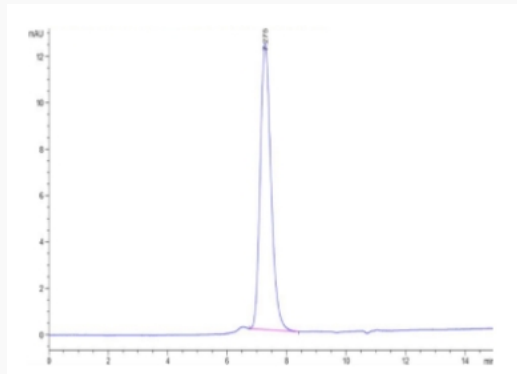
UniProt ID


P43628

Tris-Bis PAGE



SEC-HPLC



 Tel: 1-631-559-9269 1-516-512-3133

 Email: info@creative-biomart.com  Fax: 1-631-938-8127

 45-1 Ramsey Road, Shirley, NY 11967, USA