

## Recombinant Human KIR2DL4 Protein, C-His-tagged

Cat. No. KIR2DL4-083H Lot. No. (See product label)

### SPECIFICATION

**Product Overview** Recombinant Human KIR2DL4 Protein with C-His tag was expressed in E. coli.

**Species** Human

**Source** E.coli

**Description** NKAT (NK-associated transcripts) gene products, known as killer immunoglobulin-like receptors or KIRs, downregulate the cytotoxicity of NK cells upon recognition of specific class I major histocompatibility complex (MHC) molecules on target cells. This family of receptors is characterized by an extracellular region with two to three immunoglobulin-superfamily domains and a cytoplasmic domain with an antigen receptor activation motif (ARAM). KIRs and other inhibitory receptors also possess a common cytoplasmic sequence (I/VxYxxL/V) known as an ITIM (immunoreceptor tyrosine-based inhibitory motif). The human inhibitory human killer cell immunoglobulin-like receptor 2DL4 (KIR2DL4), also referred to as 2DL4 or CD158d, triggers potent IFN- $\gamma$  responses but weak cytotoxicity in resting NK cells because of the low stoichiometric association with  $\gamma$

**Molecular Mass** ~24 kDa

**AA Sequence**  
 WAHVGGQDKPFCSAWPSAVVPQGGHVTLRCHYRRGFNIFTLYKKDGVVPPELYNR  
 IFWNSFLISPVTPAHAGTYRCRGFHPHSPTIEWSAPSNPLVIMVTGLYEKPSLTARPG  
 PTVRAGENVTLSCSSQSSFDIYHLSREGEAHELRLPAVPSINGTFQADFPLGPATHG  
 ETYRCFGSFHGSPYEWSDPSDPLPVSVTGNPSSSWPSPTEPSFKTGIARHLH

 Tel: 1-631-559-9269 1-516-512-3133

 Email: [info@creative-biomart.com](mailto:info@creative-biomart.com)  Fax: 1-631-938-8127

 45-1 Ramsey Road, Shirley, NY 11967, USA

|                       |   |
|-----------------------|---|
| <b>Purity</b>         | Transferred into competent cells and the supernatant was purified by NI column affinity chromatography and the purity is > 85% (by SDS-PAGE). |
| <b>Notes</b>          | For research use only, not for use in diagnostic procedure.   |
| <b>Storage</b>        | Store at 4 centigrade short term. Aliquot and store at -20 centigrade long term. Avoid freeze-thaw cycles.                                    |
| <b>Concentration</b>  | ≥0.5 mg/mL  |
| <b>Storage Buffer</b> | PBS, 4M Urea, pH7.4   |

## GENE INFORMATION

|                        |  |
|------------------------|--|
| <b>Gene Name</b>       | KIR2DL4 killer cell immunoglobulin-like receptor, two domains, long cytoplasmic tail, 4 [ Homo sapiens (human) ]   |
| <b>Official Symbol</b> | KIR2DL4  |
| <b>Synonyms</b>        | KIR2DL4; killer cell immunoglobulin-like receptor, two domains, long cytoplasmic tail, 4; killer cell immunoglobulin-like receptor 2DL4; 15.212; 103AS; CD158D; KIR-103AS; NK cell receptor; killer Ig receptor; CD158 antigen-like family member D; MHC class I NK cell receptor KIR103AS; killer cell inhibitory receptor 103AS; natural killer cell inhibitory receptor; G9P; KIR103; KIR103AS; |
| <b>Gene ID</b>         | 3805   |
| <b>mRNA Refseq</b>     | NM_001080770   |
| <b>Protein Refseq</b>  | NP_001074239   |

 Tel: 1-631-559-9269 1-516-512-3133

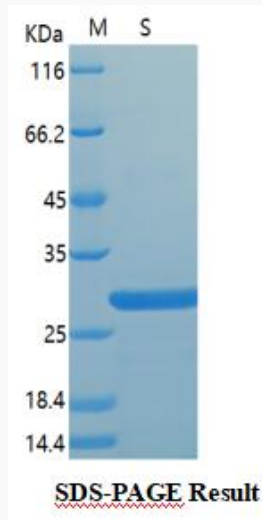
 Email: [info@creative-biomart.com](mailto:info@creative-biomart.com)  Fax: 1-631-938-8127

 45-1 Ramsey Road, Shirley, NY 11967, USA

MIM 604945

UniProt ID Q99706

SDS-PAGE



 Tel: 1-631-559-9269 1-516-512-3133

 Email: [info@creative-biomart.com](mailto:info@creative-biomart.com)  Fax: 1-631-938-8127

 45-1 Ramsey Road, Shirley, NY 11967, USA